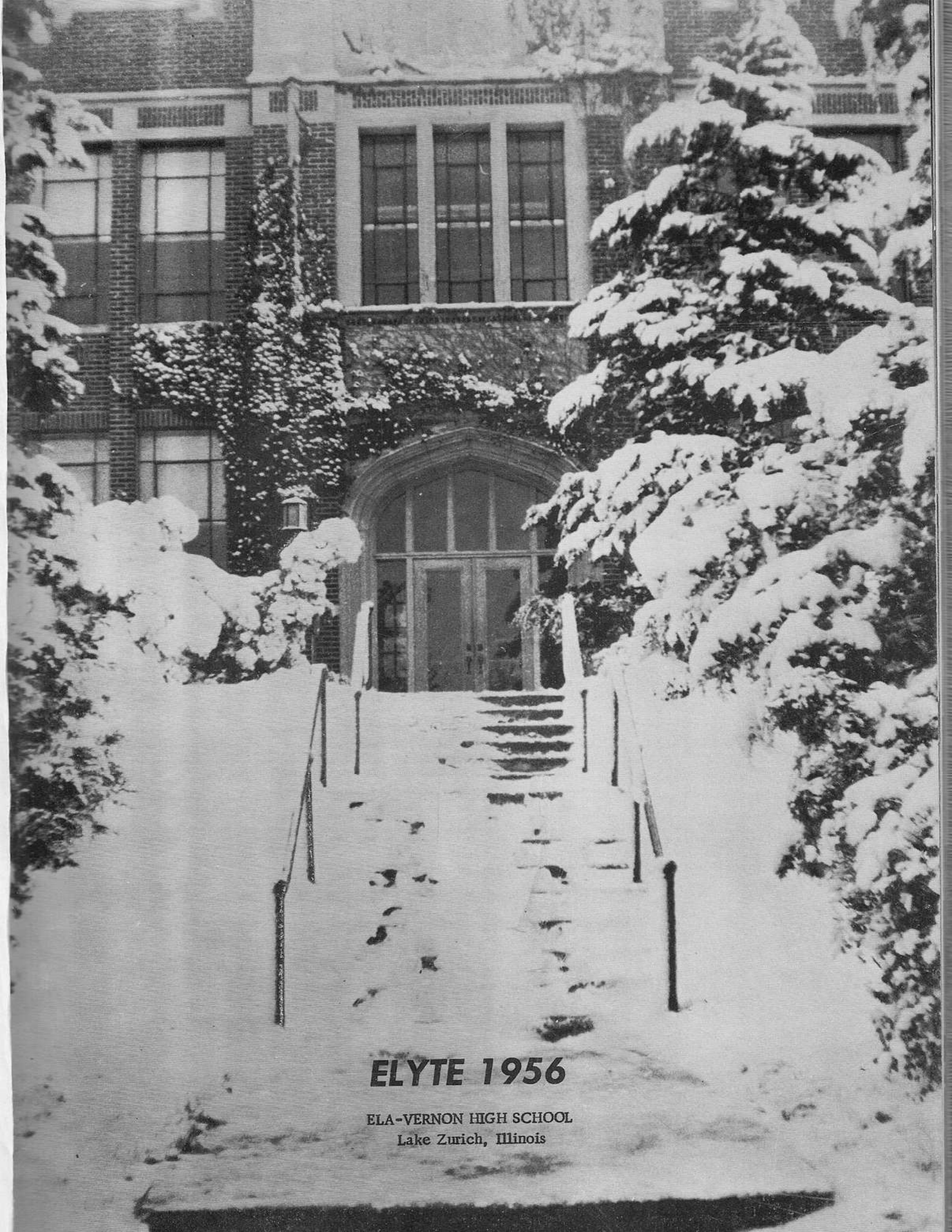




1956  
ELYTE

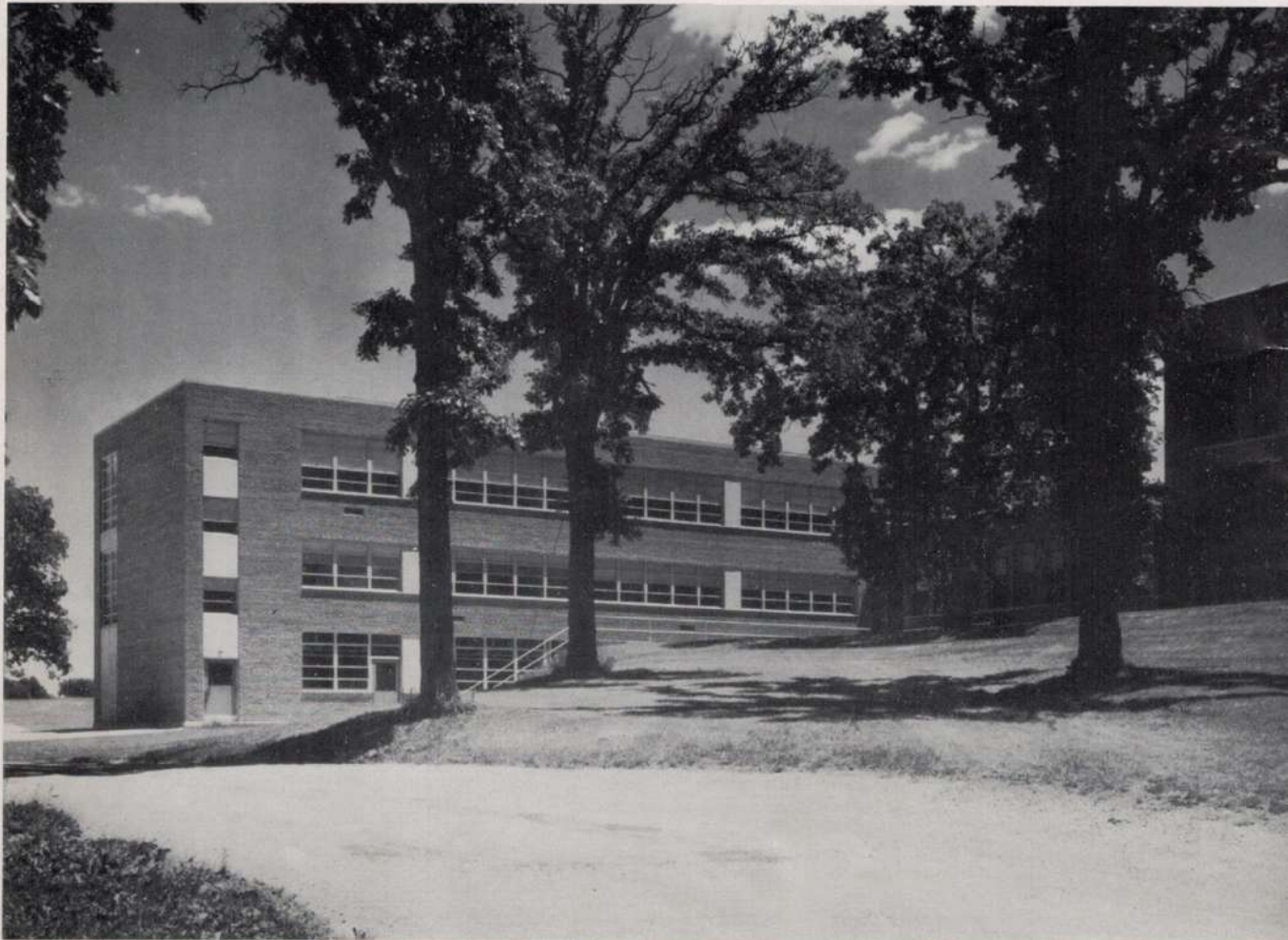


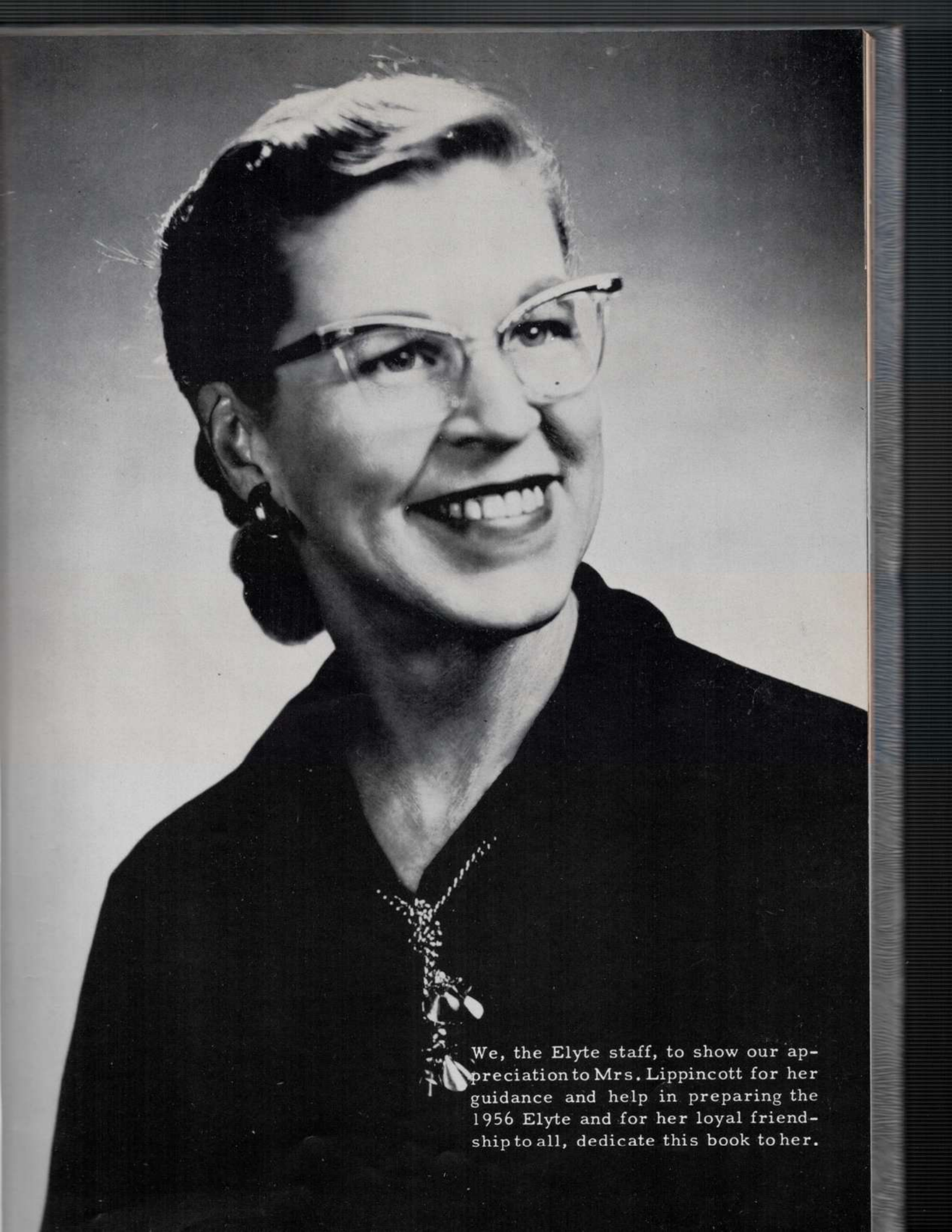
## **ELYTE 1956**

ELA-VERNON HIGH SCHOOL  
Lake Zurich, Illinois

# CONTENTS

<b>ADMINISTRATION</b> . . . . .	<b>Page 5</b>
<b>SENIORS</b> . . . . .	<b>Page 11</b>
<b>JUNIORS</b> . . . . .	<b>Page 23</b>
<b>SOPHOMORES</b> . . . . .	<b>Page 29</b>
<b>FRESHMEN</b> . . . . .	<b>Page 35</b>
<b>ACTIVITIES</b> . . . . .	<b>Page 41</b>
<b>ATHLETICS</b> . . . . .	<b>Page 49</b>
<b>ORGANIZATIONS</b> . . . . .	<b>Page 59</b>





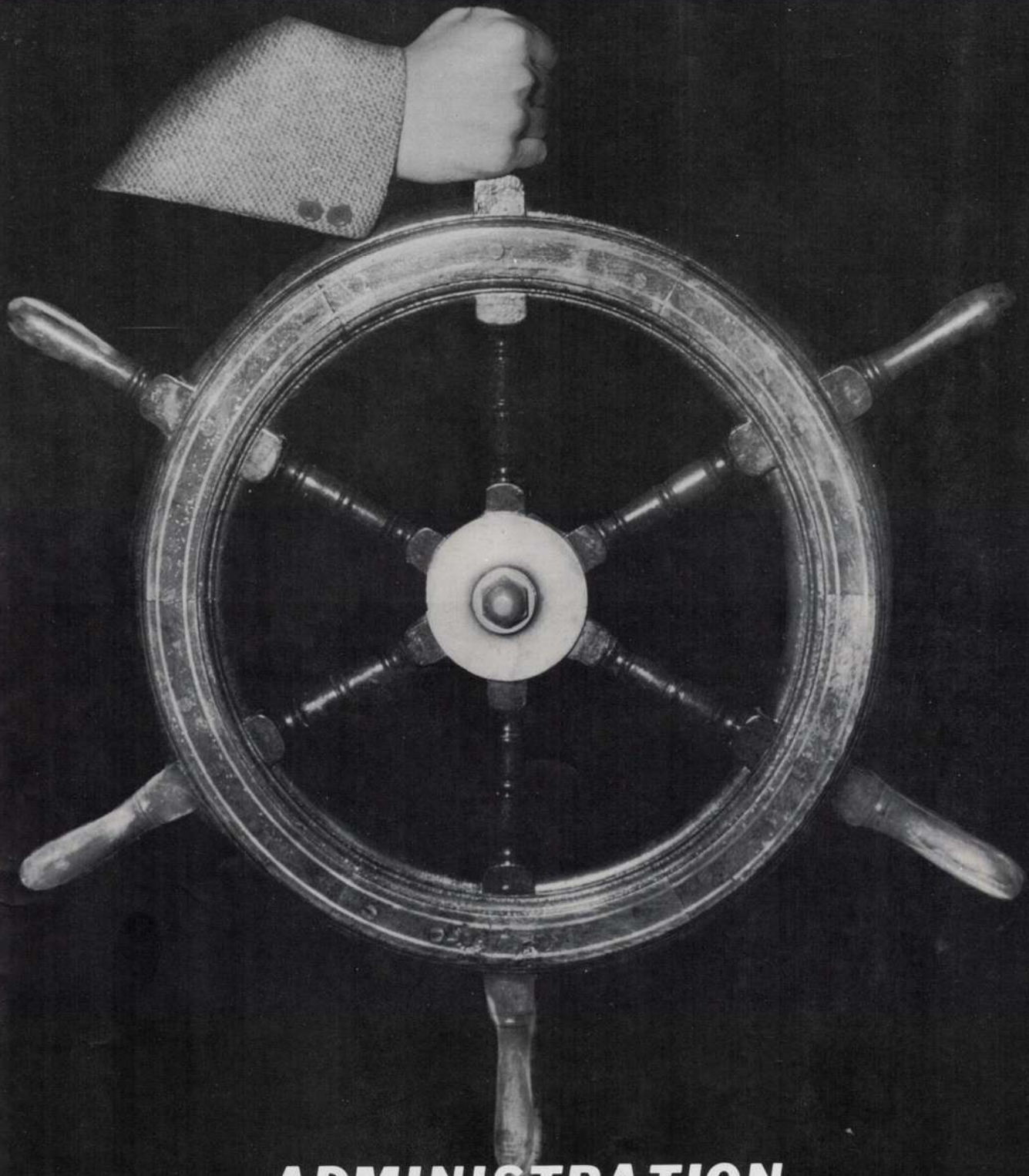
We, the Elyte staff, to show our appreciation to Mrs. Lippincott for her guidance and help in preparing the 1956 Elyte and for her loyal friendship to all, dedicate this book to her.



Top row: P. Rizzo, R. Riek, F. Fischer, R. Meyer, A. Sheehan, R. Moore, D. Schwegel, K. Second row: W. Ward, Editor; M. Miller, C. Chvojka, K. Smith, C. Anderson, M. Brehm, M. Stephens, S. Masson. Seated clockwise: N. Necker, A. Olson, K. Buerger, Business Manager Christensen, E. Krist, Mrs. Lippincott, Sponsor.

## ELYTE STAFF

We, the Class of 1956, wanting our high school days to remain in our memories forever, bring you this book. May it truly serve to remind you of our four years as we recall them.

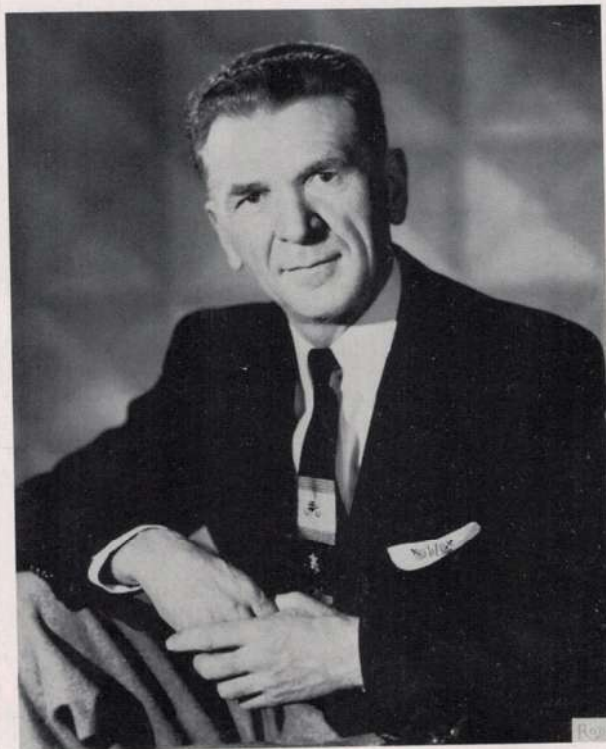


**ADMINISTRATION**



## BOARD OF EDUCATION

Standing, left to right: Clarence Sprague, August Knigge, William Park, William Hardenburgh. Seated: Floyd Gustafson, George Weiland, President; Norman Witt.



HERBERT L. WESNER, PRINCIPAL  
Ripon College, B. A.  
Marquette University, M. A.

JESSE D. ALLEN  
Agriculture  
University of Illinois, B. S.

JUNE BERGQUIST  
Home Economics  
Iowa State, B. S.

ALICE CLEARY  
English  
Illinois State Normal University, B. S.

MELVIN R. EIDE  
Assistant Principal  
Dean of Boys  
Athletic Director  
Boys' P. E.  
Varsity Baseball Coach  
Northern Illinois State College, B. Ed.

GEORGE GREEN  
Science  
Northwestern, B. S.  
Illinois State Normal University, M. S.

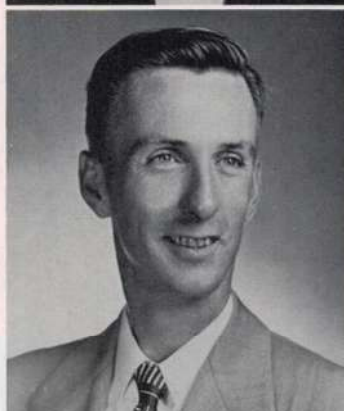
EDITH HILLEMANN  
Latin  
English  
Social Problems  
University of Iowa, B. A.

GORDON HOADLEY  
Algebra  
Shop  
Platteville State Teachers College, B. A.

OLIVE HOLLAND  
Secretary

HARRIET JACQUAT  
Dean of Girls  
Biology  
Illinois State Normal University, B. Ed.

NORMAN LADD  
Physics  
Mathematics  
Varsity Basketball Coach  
Ripon College, B. A.





ANTHONY B. LAMPE  
History  
St. Louis University, B. S., M. A.

GEORGE LANTZ  
DePaul University, B. M. Ed., M. Ed.



WILLIAM G. LEHMANN  
Science  
Social Studies  
Varsity Football Coach  
University of Illinois, B. S.  
University of Wisconsin, M. S.

CATHERINE LIPPINCOTT  
English  
St. Mary's College, B. A.



CHARLES MACHAMER  
English  
Art  
University of Illinois, B. A.

J. DAVID McCARTNEY  
Guidance Director  
Lake Forest College, B. A.  
University of Arkansas, M. S.



TED L. MEYER  
Mathematics  
Freshman - Sophomore Basketball and Football  
Illinois State Normal University, B. S.

NANETTE PERNE  
Girl's P. E.  
Illinois State Normal University, B. S.



MELISSA RITTER  
Librarian  
Illinois State Normal University, B. S.

ROSEMARY SCHEIDKER  
Speech  
Commercial  
Eastern Illinois State College, B. S.

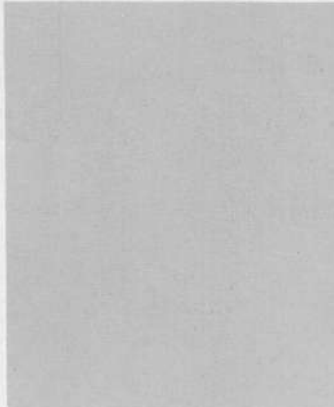
MILDRED SMEBY  
Chorus  
Northwestern University, B. M. Ed.

LAWRENCE TEMPLE  
Mathematics  
Shop  
Stout Institute, B. S., M. S.

BARBARA WARD  
Secretary

WILLIAM T. WILL  
Commerce  
Western Illinois State College, B. S.  
Northwestern University, M. A.

LILY WILLIAMSON  
Languages  
Coker College, B. A.  
University of South Carolina, M. A.





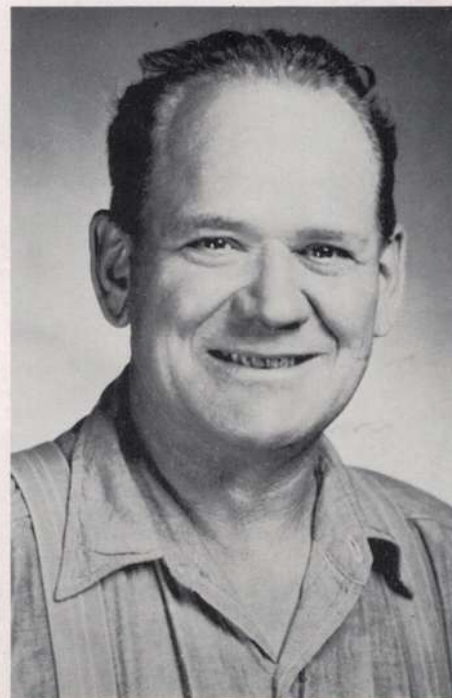
Left to right: Mrs. R. Berghorn, Mrs. R. Boe, Mrs. S. Walsh.

## CAFETERIA STAFF

### CUSTODIANS

Mr. R. Tonne

Mr. P. Deinlein

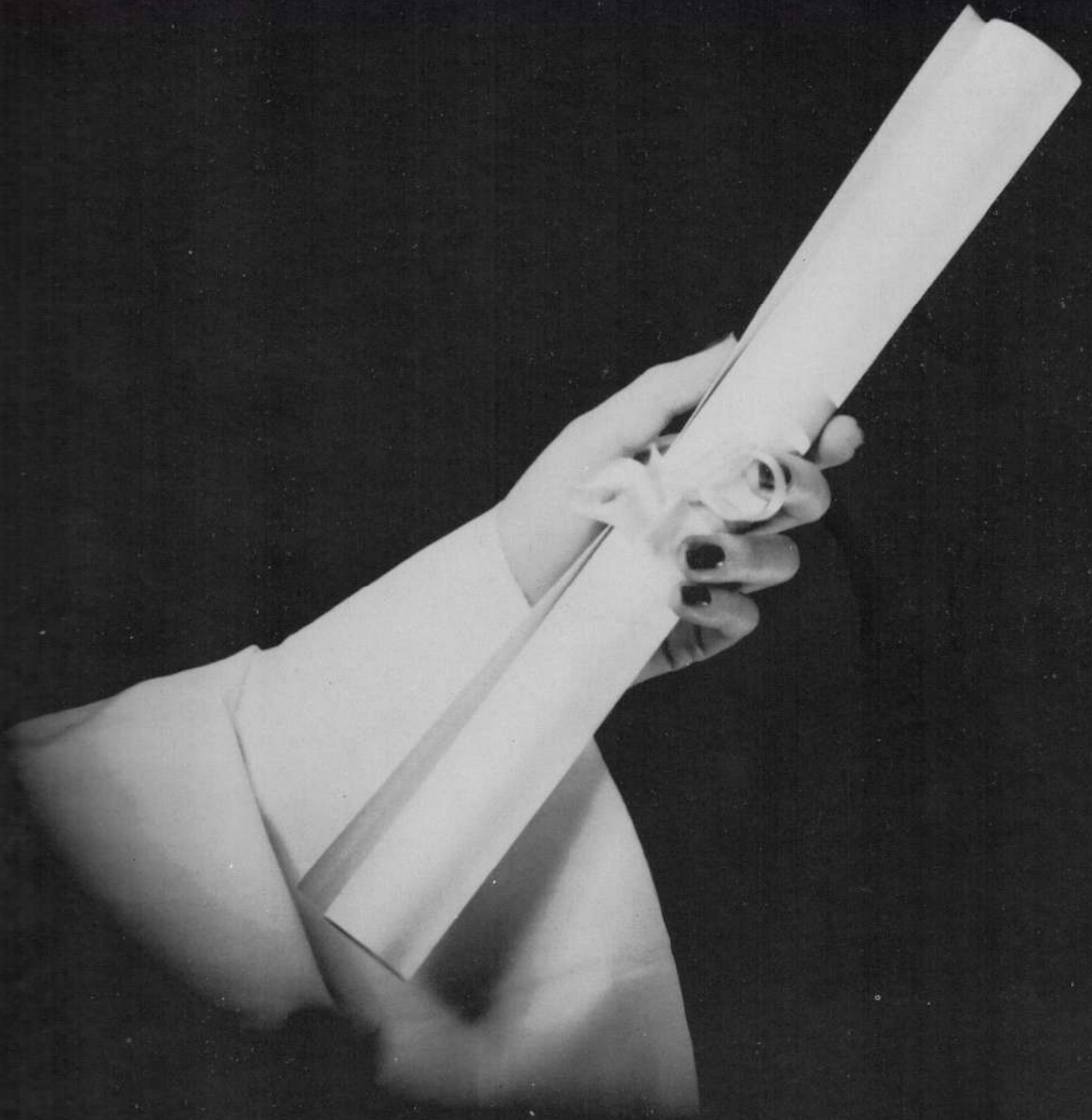


Mr. F. Ha





ess



# SENIORS



President- - - - - JACK RACKOW  
 Vice President- - - - - KAY BROWN  
 Secretary- - - - - MARTY MILLER  
 Treasurer- - - - - KARIN GUSTAFSON  
 Sponsor- - - - - MR. ALLEN

Board Members  
 MARGIE STEPHEN  
 MARILYN BREHM  
 ALLEN SHEEHAN  
 LYNN BECKER

## CLASS OF 1956

We entered high school in the fall of 1952 electing Chickie Risi, president; Bob Benson, vice president; Jack Rackow, secretary; and Al Bathrick, treasurer. The class board members were Kay Brown, Marilyn Brehm, Richard Obenauf, and Paul Rizzo. Delores Mionske, Ken Stanciu, Kurt Buerger, and Margie Stephen became the representatives on the Student Council. As a class we were inactive until the last three weeks of school when we held a raffle with a deep fryer as the prize, netting two hundred dollars.

The next year we had more confidence in ourselves. Jack Rackow became the new president. Bob Benson was vice president, Al Bathrick, secretary, and Karin Gustafson handled the money. The board members were Marilyn Brehm, Mary Jean Anson, Lynn Becker and Lee Bathrick. The Student Council representatives were Delores Mionske, Carla Anderson, Kurt Buerger, and Allen Sheehan. The float on which we spent so many trying hours received first place in the Homecoming festivities. During football season we sold popcorn which added a little money to the treasury. In March we put on a play entitled, The High School Mystery. Miss Cleary and the cast spent many long hours in practice, and in performance it was quite a success. Also in March we raffled off a portable radio. Each of these projects netted the treasury a nice sum of money.

(continued on page 21)

MARILYN ALTMANN

"Tis hard to part when friends are dear."

Bear Facts 4; GAA 2, 3, 4; Librarian 4; Pep Club 3, 4.



CARLA ANDERSON

"I have tasted the sweets and bitters of love."

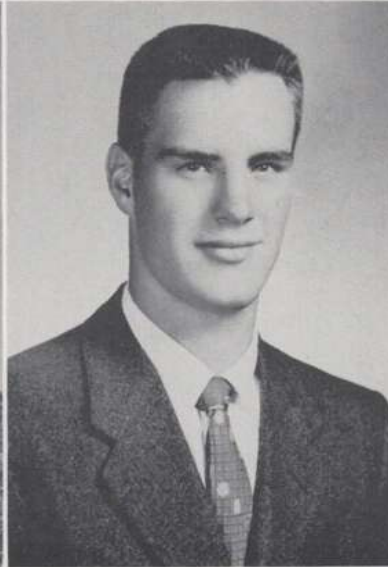
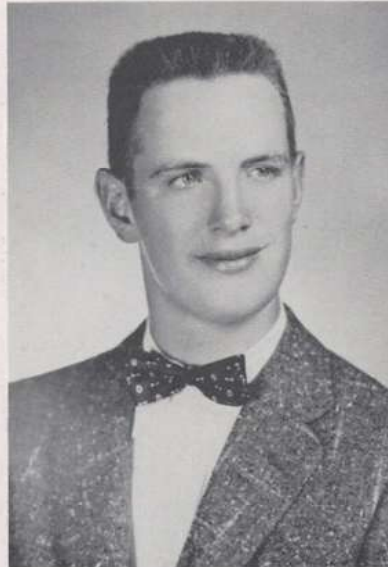
Band 1, 2; Bear Facts 1, 2; Chorus 1, 2; Class Play 2; Dramatics Club 2, 3, 4; Dramatics Club Play 3, 4; Elyte 4; GAA 1, 2, 3, 4; Pep Club 2, 3, 4; Spanish Club 3, 4; Student Council 2, 3, 4.

ALTON BATHRICK

"Al"

"What price glory?"

Baseball 1; Basketball 1, 2, 3, 4; Football 4; Golf 2, 3, 4; E-V Club 3, 4; Band 1, 2; Bear Facts 1, 2; Class Play 2; Class Secretary 2; Class Treasurer 1; Dramatics Club 3, 4; Pep Club 2, 3, 4; Spanish Club 4; All-Conference Basketball 4.



LEELAND M. BATHRICK

"Lee"

"Strong in battle is."

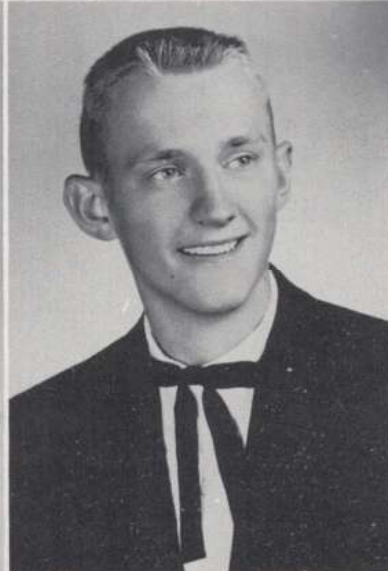
Baseball 1; Basketball 1, 2, 3, 4; Football 1, 2, 3, 4; Captain 4; All-Conference Football 3, 4; Most Valuable Player (Football 1955) 4; Golf 4; E-V Club 3, 4; President 4; Class Board 2, 3; Class Play 2; Dramatics Club 3, 4; Dramatics Club Play 3; French Club 3, 4; FTA 4; Junior-Senior Play 3; Pep Club 2, 3, 4.

LYNN BECKER

"Beck"

"Either laugh with me or at me."

Baseball 1, 2, 3, 4; Basketball 1, 2, 3, 4; E-V Club 3, 4; Class Board 2, 4; Class President 3; Pep Club 2, 3, 4; Spanish Club 3; All-Conference Basketball 4.



ROBERT NORMAN

BENSON

"Bevo"

"If you don't have fun, what's the use of living."

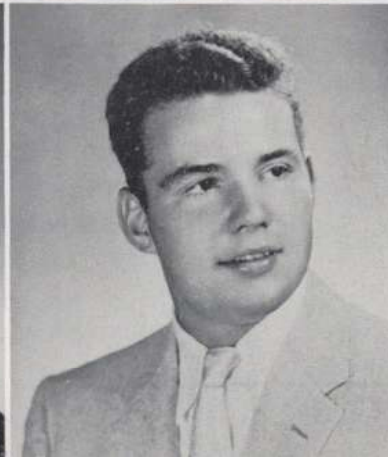
Baseball 1; Basketball 1, 2, 3; Football 1, 2, 3, 4; E-V Club 3, 4; Band 1, 2, 3; Class Vice President 1, 2, 3; Dramatics Club 3, 4; Pep Club 2, 3, 4.

THEODORE BINZEL

"Binz"

"Not that I have any special reason for hating school."

Football 4; E-V Club 4; FFA 1, 2, 3, 4; Vice President 4; Pep Club 4.



ROBERT BODINE

"Bob"

"He ran all the way."

Baseball 1; Basketball 1, 2; Football 1, 2, 3, 4; Track 2, 3, 4; E-V Club 2, 3, 4; Pep Club 2, 3.

JACQUELYN BORUCKI

"Jacquie"

"The scratching of a pen."

Bear Facts 4; Chorus 2; Dramatics Club 3, 4; FTA 4.



BARBARA BRANDT

"Barbs"

"A hearty laugh is better than none."

Bear Facts 2, 3; Dramatics Club 3, 4; Elyte 4; FHA 1; French Club 2; GAA 1, 2, 3, 4; Pep Club 2, 3, 4.

MARILYN BREHM

"Mare"

"She cheered her way to victory."

Baton Twirler 1, 2; Class Board 1, 2, 4; Cheerleader 3, 4; Chorus 1; Dramatics Club 4; Dramatics Club Play 4; Elyte 4; FHA 2, 3; GAA 2, 4; Girls' State 3; Homecoming Queen 4; Pep Club 2, 3, 4, President 4.



KATHRYN BROWN

"Kay"

"Personality plus"

Bear Facts 2, 3, 4; Class Board 1, 3; Class Vice President 4; Dramatics Club 3; French Club 3, 4, Treasurer 4; GAA 1, 2, 3, 4; Homecoming Attendant 4; Pep Club 3, 4.

KURT BUERGER

"Of Caesar's hand and Plato's brain."

Class Play 2, 3; Dramatics Club 3, 4; Dramatics Club Play 4; Elyte 4, Business Manager 4; German Club 4; Pep Club 2, 3, 4; Spanish Club 3, 4, President 4; Student Council 1, 2, 3, 4, Vice President 3, 4.



CAROL ANN CHRISTENSEN

"Christy"

"She excels in all she attempts."

Bear Facts 2, 3; Class Play 2; Chorus 1, 2; Dramatics Club 3, 4; Elyte 4; FHA 1, 2, 3; FTA 4; GAA 1, 2, 3, 4, Treasurer 3; Pep Club 2, 3; Photography Club 4, Treasurer 4.

CAROLE CHVOJKA

"Foxi"

"Don't let the silence fool you."

Bear Facts 2, 3; Chorus 1, 2; Elyte 4; GAA 1, 2, 3, 4, Secretary 3; Pep Club 2, 3, 4; Spanish Club 3.



RICHARD COOK

"Dick"

"It is impossible to find out what passes in any man's mind."

Transferred from Warren 3.

PAUL DIDIER

"Well, I've had a happy life."

Class Board 3; FFA 1.



"Sandy"  
Quietness speaks efficiency."

Bear Facts 3; Dramatics Club 4; Dramatics Club Play 4; GAA 2; Pep Club 3.

JAMES EMMERICH

"Jim"

"The more I see of some people -- the better I like my 'Chevy'."

Basketball 3; Football 4; E-V Club 4; Pep Club 2, 3; Photography Club 2, 3.



PATRICIA ERHARDT  
"Pat"

"Life is just one darn thing after another."

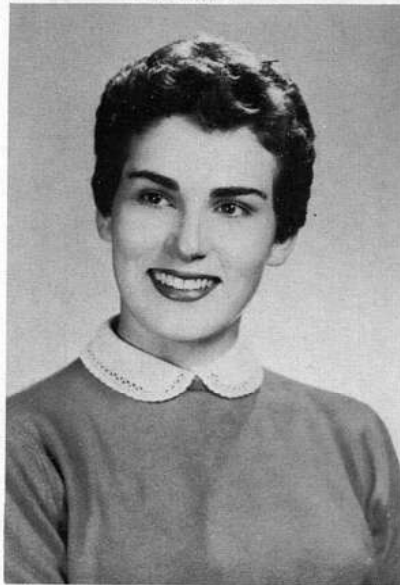
Transferred from Harper High School 3; Dramatics Club 4; Pep Club 4.

JUDITH FARNER

"Judy"

"As merry as the day is long."

Bear Facts 1, 2, 3; Cheerleader 2, 3; Dramatics Club 3, 4; GAA 1, 2, 3; FHA 1; Pep Club 2, 3, Treasurer 2.



JOHN HENRY FENNER

"Jes' to hear John Henry's hammer ring."

Baseball 1, 3, 4; Football 1, 2, 3, 4; E-V Club 3, 4; Pep Club 2, 3, 4.

FALLON FISCHER

"Of science and logic he chatters"

Band 1, 2, 3, 4; Baseball Manager 2; Football Manager 1; Class Play 2; Dramatics Club 3, 4; Elyte 4; Photography Club 3, 4.



JANE GLINIECKI

"The blush is beautiful but sometimes inconvenient."

Bear Facts 1, 2, 3; Class Board 3; Chorus 1; Dramatics Club 4; FHA 1, 2; GAA 2; Pep Club 3, 4.

"Gus"

"She came, she saw,  
she organized."

Bear Facts 2, 3, 4; Bus-  
iness Manager 3, 4;  
Cheerleader 4; Class  
Play 2; Dramatics Club  
3, 4; Dramatics Club  
Play 4; French Club 3,  
4, President 4; GAA 1,  
2, 3, 4, Vice President  
3, President 4; Pep Club  
2, 3, 4; Prom Court 3.



SYLVIA ROSE HUIZENGA

"Is she not sweet?"

GAA 1; FHA 2; Pep Club  
4.



ROBERT KADEN

"Bob"

"Anything for a quiet  
life."

FFA 2, 3, 4; German  
Club 4.



LOIS KOCH

"A light heart lives  
long."

FHA 1, 2; GAA 2.



STANLEY HORCHER

"Stosh"

"Sleep is my middle  
name."

Football 2, 3, 4; E-V  
Club 3, 4.

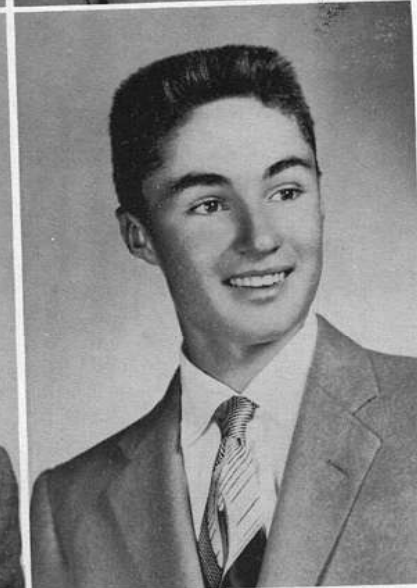


CAROL ANN JONES

"Jonesy"

"It is good to be merry  
and wise."

Bear Facts 3, 4, Fea-  
tures Editor 4; Chorus  
1, 2, 3, 4, Vice Presi-  
dent 4; Dramatics  
Club 3, 4; FHA 1, 2, 3,  
4, First Vice President  
4; GAA 1, 2, 3, 4; Pep  
Club 2, 3; Spanish  
Club 3.

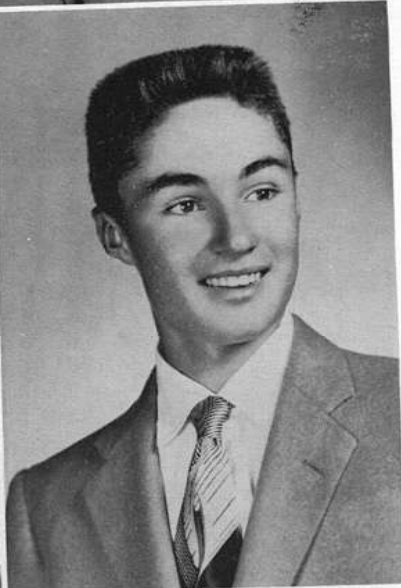


KENNETH KNOX

"Big Klu"

"All good men are dy-  
ing -- I don't feel  
well myself."

Elyte 4; FFA 1; Librar-  
ian 3; Pep Club 3, 4.



EDNA KRIST

"I would live to study,  
and not study to live."

Baton Twirling 1;  
Chorus 1; Dramatics  
Club 4; Elyte 4; FHA  
1; GAA 4; Pep Club  
4; Photography Club 3.



WILLIAM KRUEGER

"Bill"

"It's a good car when  
it runs."

FFA 1, 2, 3, 4; Pep Club



WERNER LANGENBACH

"Our past, present, and  
future farmer."

Band 1, 2, 3, 4; FFA 1,  
2, 3, 4.

THOMAS LEIKAM

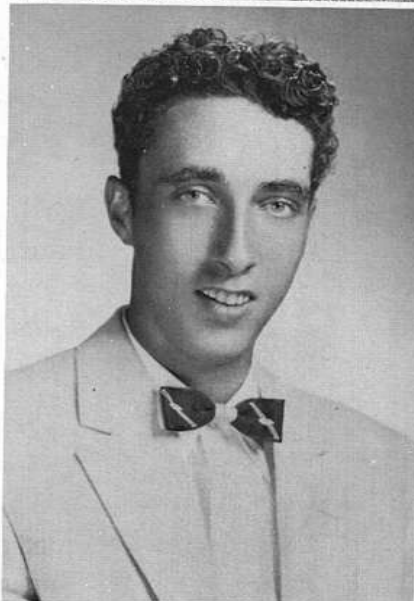
"Sam"

"He's not lazy, just  
sized."

Baseball 2, 3; Football

3, 4; E-V Club 3, 4;

FFA 1.



CAROLYN MASSON

"Sue"

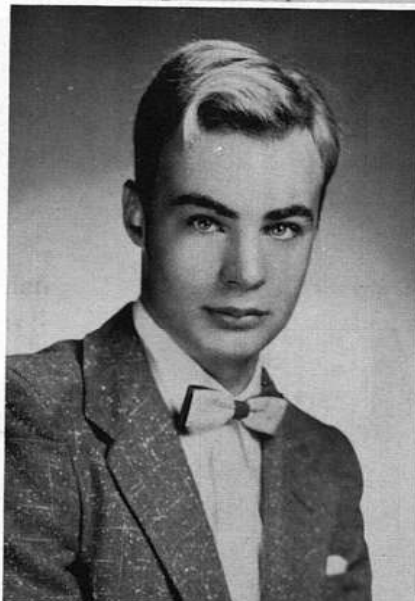
"This lass so neat."

Bear Facts 2, 3, Sports  
Editor 3; Chorus 1, 2,  
3; Class Play 2; Drama-  
tics Club 3, 4; Secretary  
4; Dramatics Club Play  
3; Elyte 4; FTA 4; GAA  
1, 2, 3, 4; Pep Club 2,  
3, 4; Spanish Club 3.

EUGENE MAZUREWICZ

"Euge"

"The steady silent type."



CAROL L. MEYER

"The only way to have  
friends is to be one."

Bear Facts 4; GAA 2,  
3, 4; Librarian 4; Pep  
Club 3.

RONALD Q. MEYER

"Ron"

"He hounds rebounds."

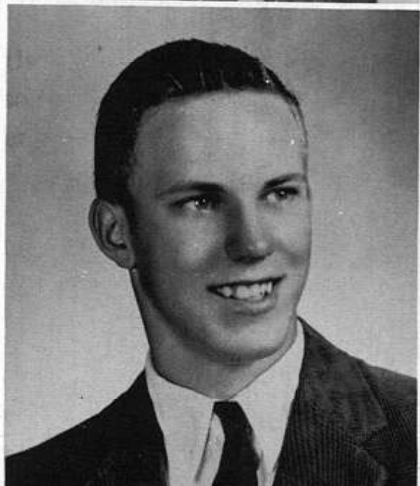
Baseball 1, 2, 3, 4;

Basketball 1, 2, 3, 4;

Football 1, 2; E-V Club

3, 4. Treasurer 4; Elyte

4; Pep Club 3, 4.



MARTHA P. MILLER

"Marty"

"The world will delight  
in sunny people."

Transferred from New  
Trier 3; Bear Facts 3;  
Class Board 3; Class  
Secretary 4; Dramatics  
Club 3, 4, Secretary 3,  
President 4; Elyte 4;  
GAA 4; Pep Club 3, 4;

"Let's be gay while we may."

Band 1, 2; Bear Facts 2; Chorus 1, 2; Dramatics Club 3; FHA 1; GAA 2; Student Council 1, 2.



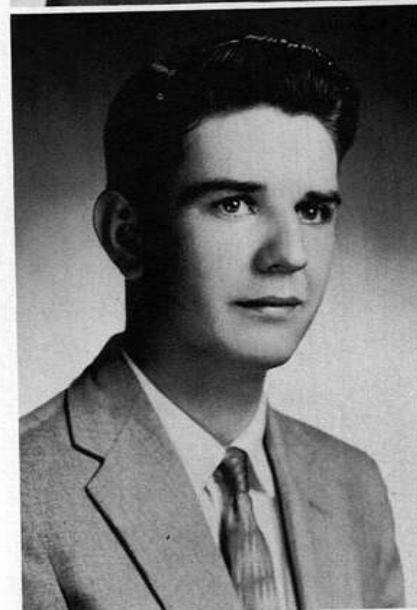
RICHARD MOELHENS  
"Dick"  
"In farm and field."  
Band 1, 2; FFA 1, 2, 3, 4, Reporter 4, Sentinel 3.

ROGER MOORE

"Rog"

"Shutterbug"

Baseball 1, 2; Basketball 2; Football 2, 3, 4; E-V Club 3, 4; Class Play 2; Dramatics Club 3, 4; Elyte 4; Junior-Senior Class Play 3; Pep Club 2, 3; Photography Club 1, 2, 3, 4.



GERALDINE MORTON

"Gerry"

"She has a gleam in her eye."

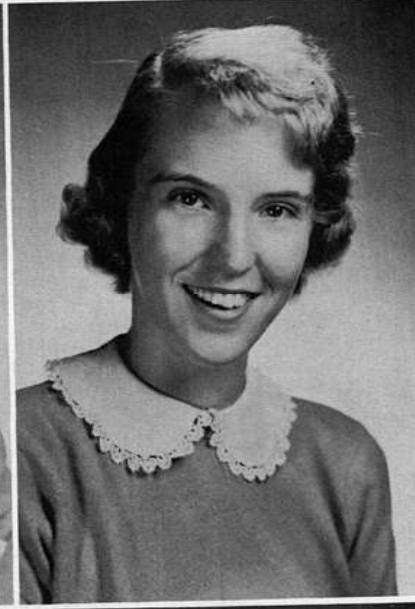
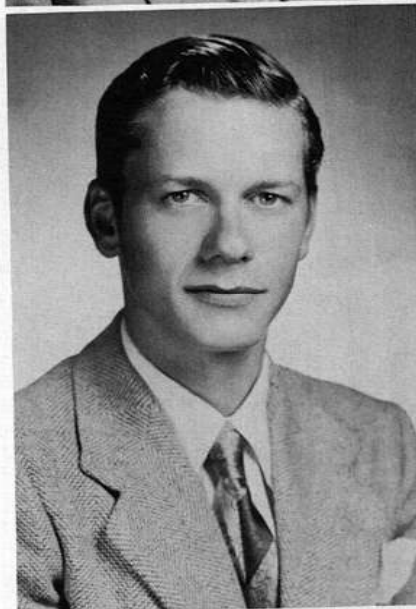
Transferred from Wauconda High School 1; Bear Facts 2, 3, 4; Dramatics Club 3; FHA 1, 2; GAA 1, 2, 4; Homecoming Court 2; Pep Club 2, 3, 4; Prom Court 3; Spanish Club 3.

NORBERT W. NECKER

"Norb"

"Photo proxy"

Chess Club 3; Dramatics Club 4; Elyte 4; German Club 4; Pep Club 3, 4; Photography Club 2, 3, 4, President 3, 4.



JUDITH NEHMER

"Judy"

"Lean and lanky, seldom cranky."

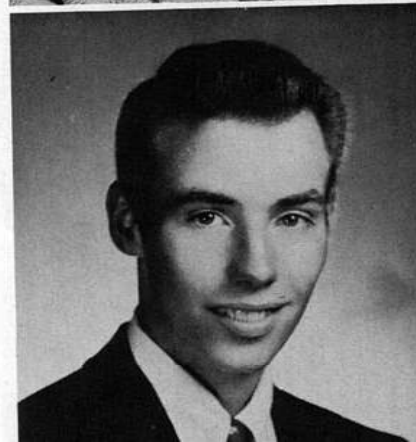
GAA 1, 4; Pep Club 1, 4.

RICHARD OBENAUF

"Archie"

"Man of the field."

Track 3, 4; Class Board 1; FFA 1, 2, 3, 4; Pep Club 2, 3, 4.



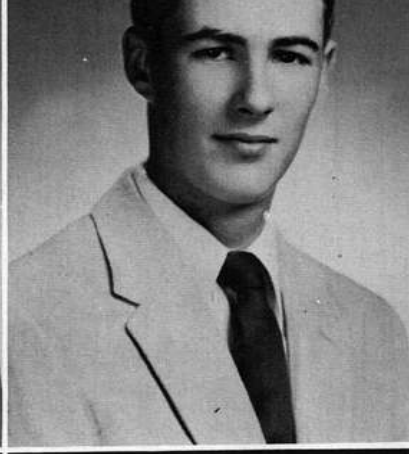
THERESE OBENAUF

"The 'number one' homemaker."

Baton Twirling 1; Chorus 1; French Club 3; Librarian 2; Pep

...a horse, a horse, my kingdom for a horse."

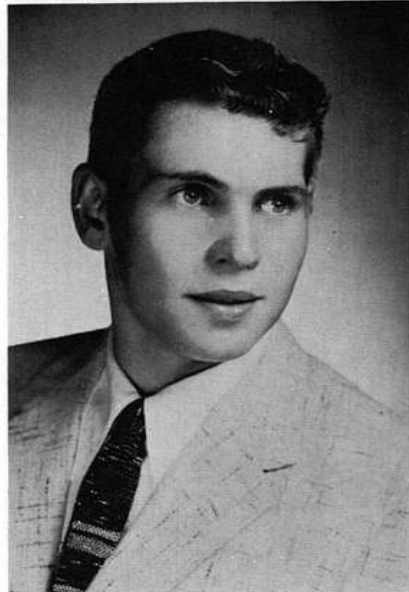
Band 1, 2, 3, 4, President 4, Drum Majorette 4; Bear Facts 2, 3, Art Editor 2, 3; Chorus 1, 2, Accompanist 3, 4; Dramatics Club 3, 4; Elyte 4; FTA 4; GAA 1, 3, 4; Pep Club 3, 4.



THOMAS CLARKE ONG  
"T. Ong"  
"Everyone has had devilish moments."  
Baseball 4; Basketball 2; Football 1, 2, 3; E-V Club 3, 4; Dramatics Club 3, 4; Pep Club 2, 3, 4.

JOHN A. PAVLOVICH  
"Pavy"  
"Only one transmission this week?"

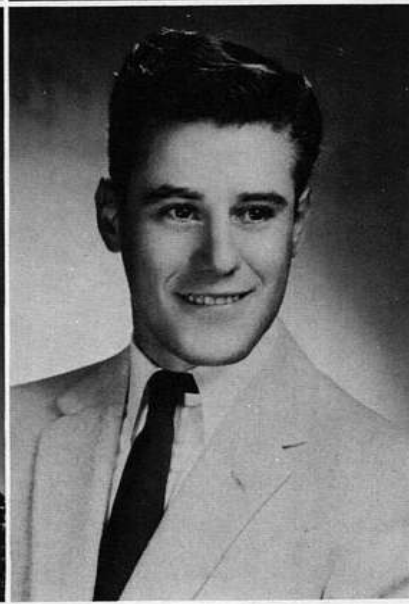
Basketball 1, 2, 3; Football 1, 2, 3, 4; Track 3; E-V Club 3, 4; Band 1, 2.



DONNA PETRAKOVITZ  
"Trak"  
"Sports enthusiast"  
Bear Facts 2, 3, 4, Feature Editor 3, Sports Editor 4; Class Play 2; Chorus 1, 2, 3; Dramatics Club 3, 4; Dramatics Club Play 3; FHA 1, 2, 3, 4, First Vice President 3, President 4; FTA 4; GAA 1, 2, 3, 4; Pep Club 2, 3; Spanish Club 3.

JOHN L. RACKOW, JR.  
"Jack"  
"Anyone for golf?"

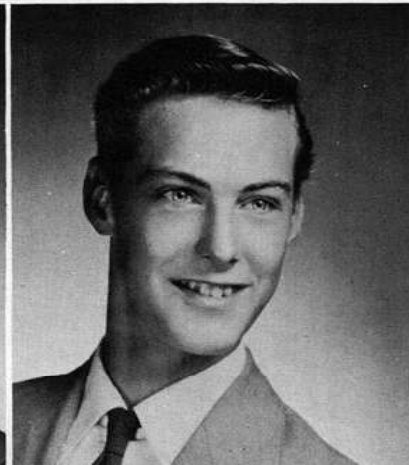
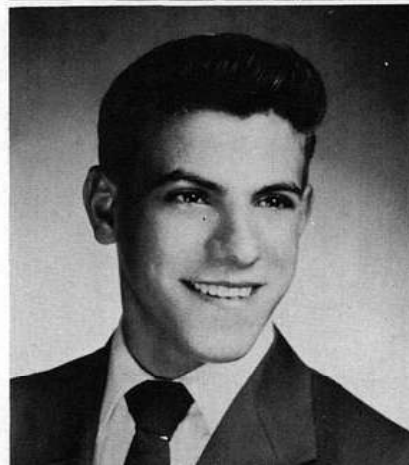
Baseball 1, 2; Basketball 1, 2, 3; Football 1, 2; Golf 3, 4; Band 1, 2; Class Board 3; Class President 2, 4; Dramatics Club 3, 4; Dramatics Club Play 4; Junior-Senior Play 3.



LOUIS RISI  
"Chick"  
"We love being in love, that's the trouble on't."  
Football 1; Track 1, 2, 3; E-V Club 2, 3; Class President 1; Homecoming Court 1; Prom King 3; Pep Club 2, 3.

PAUL RIZZO  
"Mort"  
"Everything comes if a man will only wait."

Class Board 1; Elyte 4.



DAVID L. SCHUMACHER  
"Dave"  
"It's no sin to look at a pretty girl."  
FFA 4; Pep Club 3, 4.

"A live wire never gets stepped on."

Football 1, 2, 3, 4;  
E-V Club 3, 4; Band  
1, 2; Bear Facts 3;  
Dramatics Club 3, 4;  
Dramatics Club Play  
3; Elyte 4; Pep Club  
4.



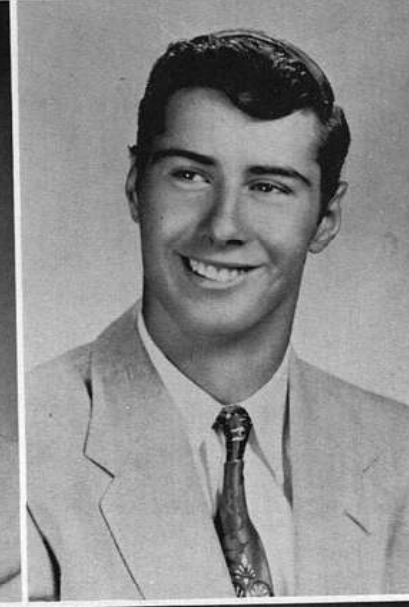
man."

Class Board 4; Chorus  
1; Elyte 4; FFA 1;  
Football 1; Pep Club  
3, 4; Photography Club  
3, 4, Vice President 3,  
4; Student Council 2,  
3, 4, Treasurer 3,  
President 4.

RONALD SOOS  
"Ron"

"He has more fun in a  
minute than others  
have in a lifetime."

Transferred from Bar-  
rington 3; Basketball  
3, 4; Football 3, 4;  
Golf 4; Track 3; E-V  
Club 3, 4; Class Board  
3; Pep Club 3, 4.



KENNETH GEORGE  
STANCIU  
"Ken"

"Here comes ---there  
goes Kenny!"

Baseball 1; Basketball  
1, 2, 3, 4; Football 1, 2,  
3, 4; Golf 3, 4; Track  
1, 3, 4; E-V Club 3, 4;  
Spanish Club 4; Student  
Council 1.

MARJORIE STEPHEN  
"Mergie"

"Take a pair of spark-  
ling eyes."

Bear Facts 2, 3; Class  
Board 4; Cheerleader  
1; Dramatics Club 3,  
4; Elyte 4; FHA 3, 4,  
Secretary 4; FTA 4;  
GAA 1, 2, 3, 4; Pep  
Club 2, 3, 4; Prom  
Court 3; Student Coun-  
cil 1.



HELEN SWICHTENBERG  
"Hel"

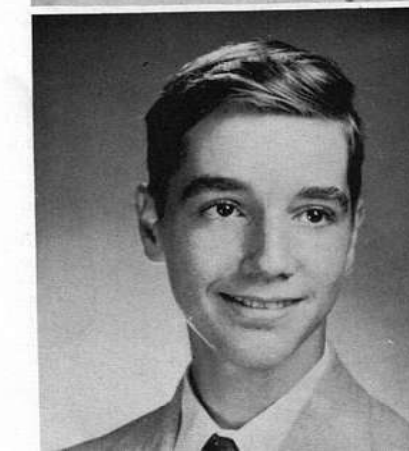
"Look out for those eyes"

Bear Facts 3, 4; Dra-  
matics Club 3, 4; FHA  
1, 2, 3, 4; GAA 1, 2, 3;  
Pep Club 2, 3; Spanish  
Club 3.

GEORGE THEURER

"Keep quiet and people  
will think you are a  
philosopher."

Transferred from Niles  
Township High School



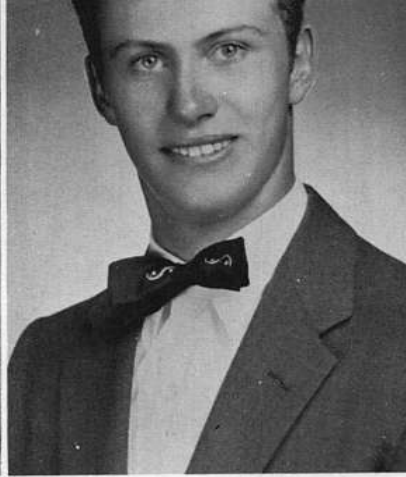
WILMA WARD  
"Willi"

"So little done, so  
much to do."

Bear Facts 2, 3; Class  
Board 3; Elyte 3, 4,  
Editor 4; FHA 1, 2, 3,  
4, Board 2, Second  
Vice President 4; GAA  
1, 2, 3, 4, Vice Presi-

"Every artist was first an amateur."

Transferred from Barrington 2; Bear Facts 3, 4; Chorus 3; FHA 3, 4; GAA 3, 4; Junior-Senior Class Play 3; Pep Club 3, 4.



CARL ERVIN WEGNER  
"Slats"

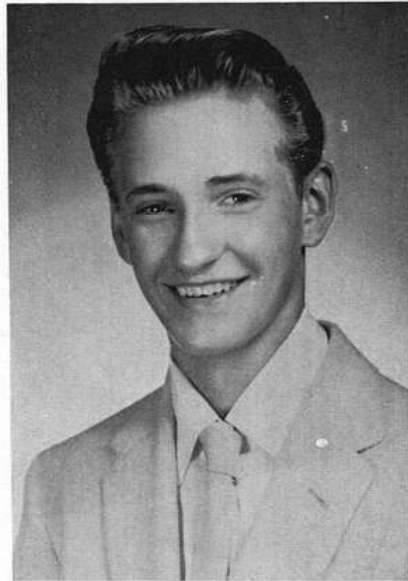
"Let me die eating ortolans to the sound of soft music."

Chorus 2; FFA 1, 2, 3, 4.

GERALD WILKINS  
"Gerry"

"The curfew must not ring tonight."

Basketball 1, 2; Football 2; Pep Club 3.



PHYLLIS WROSCH  
"Phyl"

"Happiness is a habit-- and she cultivates it."

FHA 1, 4; GAA 1, 2, 3, Pep Club 3, 4.

Not Pictured: MARY JEAN RISI

"It's nice to be natural when you're naturally nice."

Bear Facts 2, 3; Cheerleader 1, 2, 3; Class Board 2; Class Secretary 3; Dramatics Club 3; French Club 2, 3, Secretary 3; GAA 1, 2; Homecoming Court 2, 3; Pep Club 2, 3, Secretary 2, 3; Prom Queen 3.

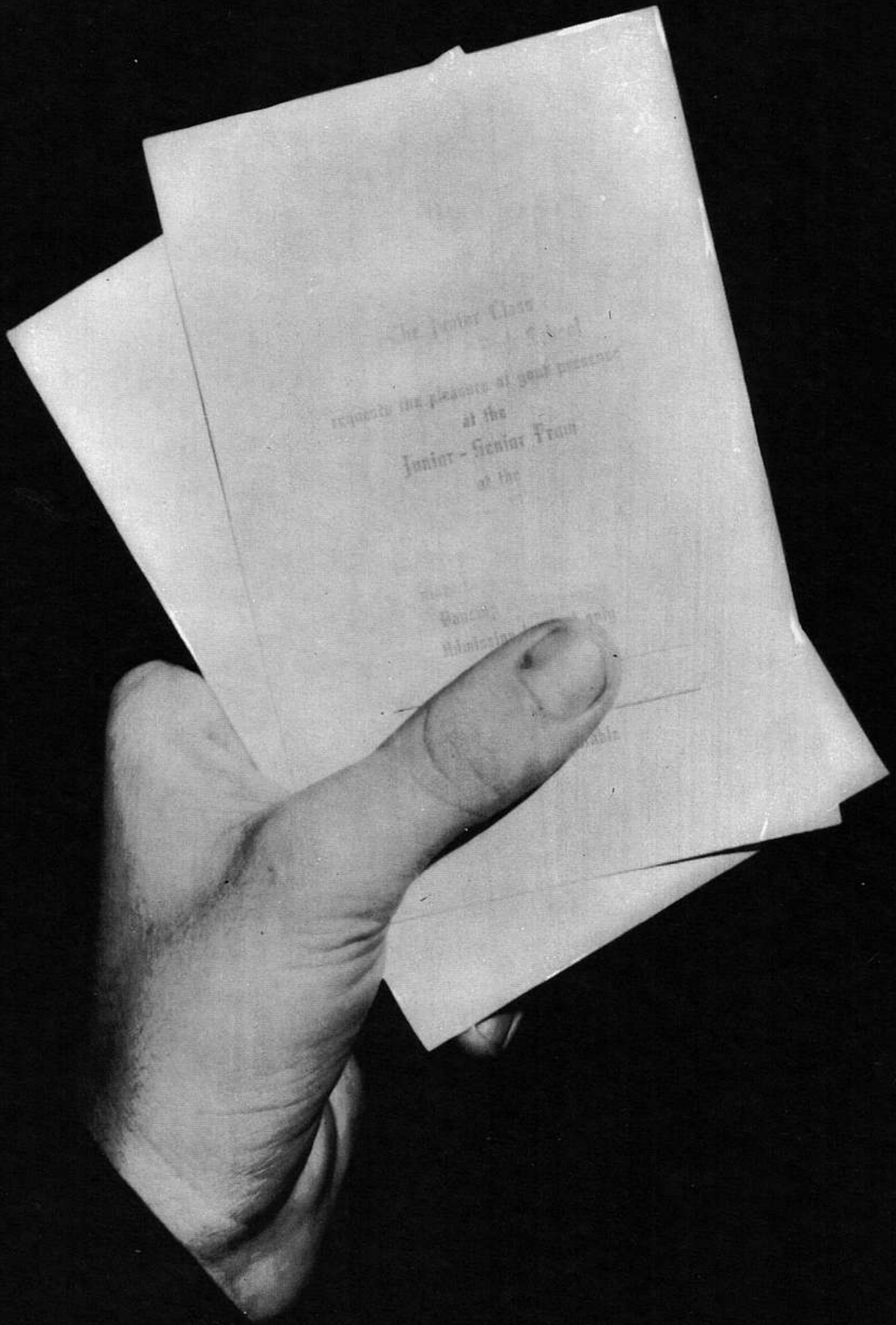
(continued from page 12)

When September came, we were upper classmen. The election was held and Lynn Becker came out with the top office, Bob Benson for the third year was vice president, Mary Jean Anson, secretary, and Karin Gustafson handled the money. The board members were Lee Bathrick, Wilma Ward, Paul Didier, Kay Brown, Jack Rackow, Ron Soos, Jane Gliniecki, and Marty Miller. The Student Council representatives were Allen Sheehan, Council treasurer, Kurt Buerger, Council vice president, Carla Anderson, and Wilma Ward. As soon as semester exams were finished, all the available time was spent planning for the Prom, "An Evening in Paris," on May 15. Soft, dreamy music was provided by Vern Perry.

Our senior year was the best of all. Jack Rackow was elected president, Kay Brown served as vice president, Marty Miller as secretary, and Karin Gustafson as treasurer. The board members were Margie Stephen, Marilyn Brehm, Allen Sheehan, and Lynn Becker. The senior class was represented in the Student Council by Allen Sheehan, Council president, Kurt Buerger, who was vice president, Wilma Ward, and Carla Anderson. We sponsored the Homecoming Dance and the Glo-Notes played the music. Next came the Snowball, which was a dinner dance at Old Orchard Country Club. In the spring the annual Senior Carnival was held.

The next thing we knew we were sitting on the Ela-Vernon stage for the last time. Our four





# JUNIORS



President- - - - - ERV POHLMAN  
 Vice President- - - - - RICK LIPPINCOTT  
 Secretary- - - - - JOYCE WITRY  
 Treasurer- - - - - KATIE SMITH  
 Sponsor- - - - - MR. LAMPE

Board Members  
 JOHN SCHUCHARDT  
 SNOOKIE PELLICCA  
 JIM BUCIAK  
 SUZY GREGORY

## CLASS OF 1957

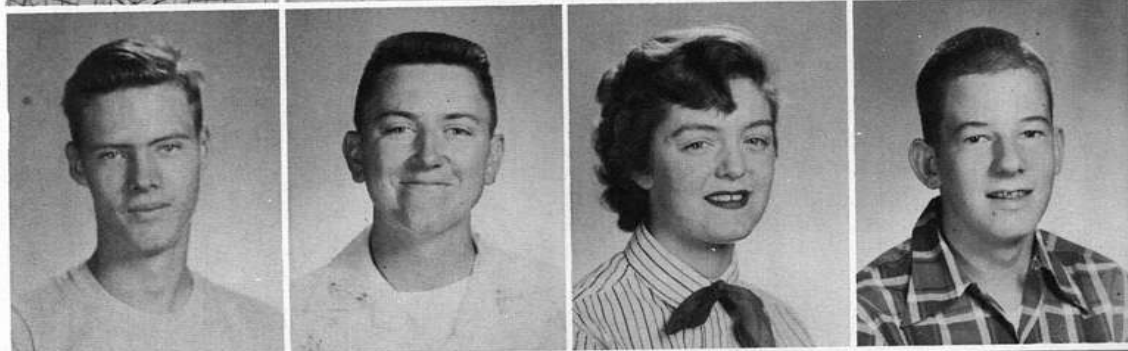
When elections were held early in the fall, Erv Pohlman took over the presidency of the class of 1957 with Rick Lippincott serving as vice president, Joyce Witry as secretary, and Katie Smith as treasurer. The representatives on the Student Council were Linda Anderson, Council secretary; Erv Pohlman, Council treasurer; Bob Riek, and Vena Poeschl.

In order to build up its treasury, the class sold chocolate bars monogrammed with the picture of the Ela-Vernon Bear and the school's name. The results of this sale gave a more respectable appearance to the junior treasury. In January Frances Jankowski was the general chairman of a successful Turnabout Dance. Along with the expert help of Mr. Lampe, the juniors gave a truly luxurious prom on the nineteenth of May.

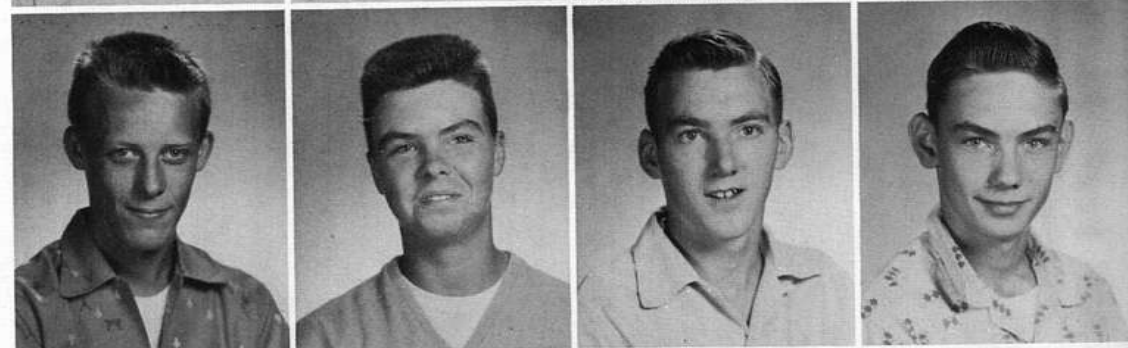
DAVID ADAMS  
LINDA ANDERSON  
ERNEST ANDREAS  
JAMES ANDREW



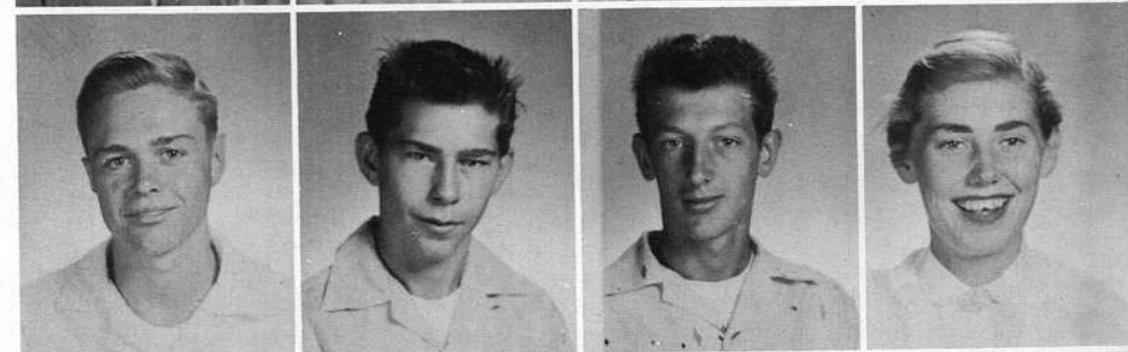
JAMES BALLEE  
DONALD BERGHORN  
SADIE BLAKE  
RICHARD BOE



RICHARD BRAME  
CALVIN BRANUM  
THOMAS BREHM  
BRUCE BREMER



ROBERT BRENNER  
WILLIAM BROWN  
JAMES BUCIAK  
JUDITH BUTT



JANET CHRISTENSEN  
JAMES CONRAD  
SAUNDRA CRAIG  
EARL DEPPE



CLAUDETTE DYBACK  
GLEN EICHMANN  
PATRICIA FOLEY  
ARLEEN FORGETTE



CHARLES GILMAN  
SUE GORDLEY

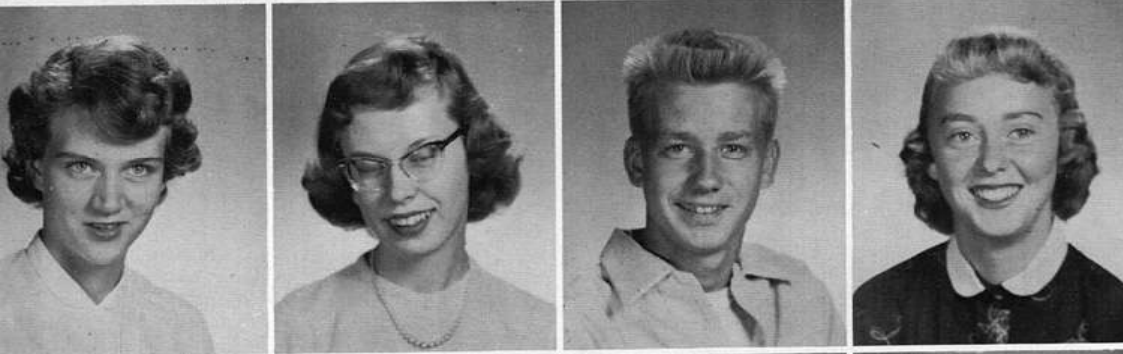




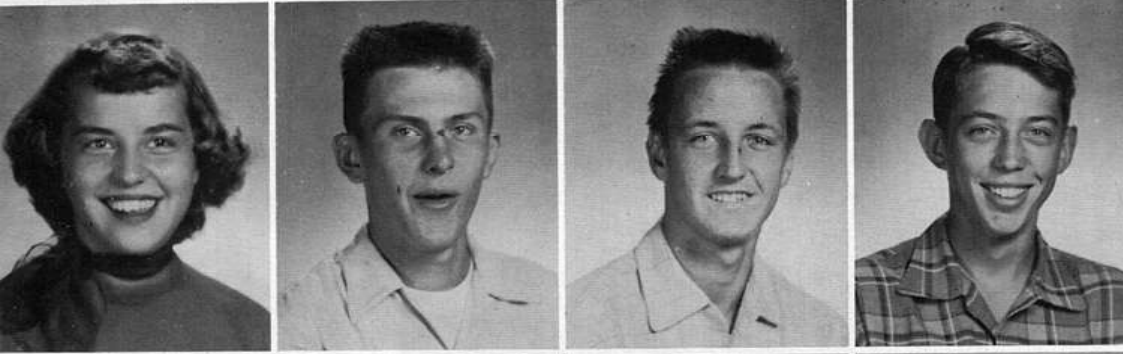
DONNA GREVER  
ROBERT HANSEN  
WAYNE HEJKA



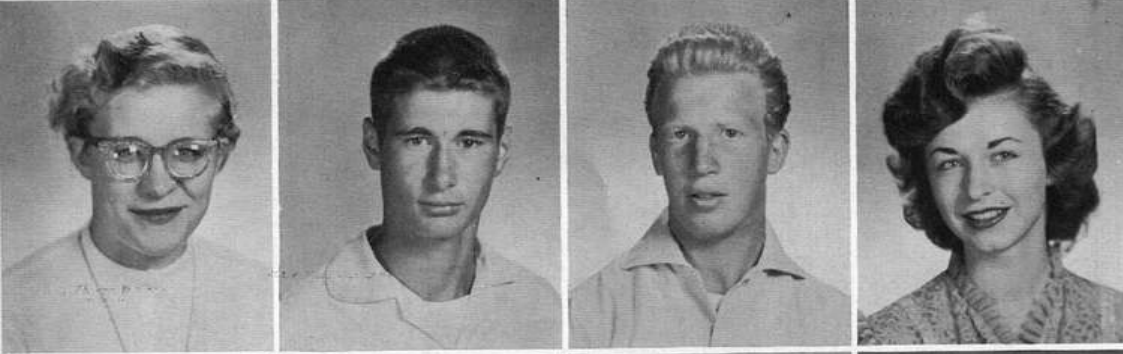
EVALYN HENDON  
DELORES HENDREY  
ARLENE HENNEMAN  
NANCY HOLST



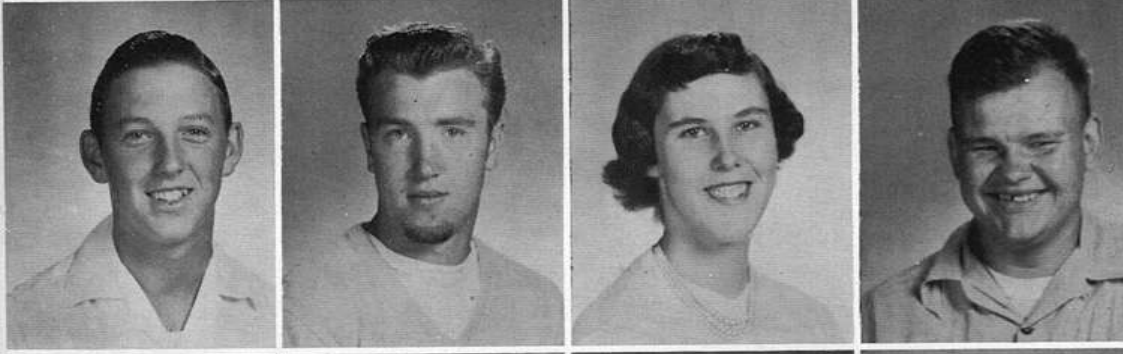
NANCY HOUGH  
SHARON HOWARD  
EUGENE INGLES  
EDITH IVERSON



FRANCES JANKOWSKI  
NORMAN JESSE  
FRANK KEOUGH  
THOMAS KLEINER



LOUISE KNAUTH  
RICHARD KREUSER  
RICHARD KRONN  
DARLENE LARSON



JACQUES LAVOISE  
PHILIP LIGHT  
CAROL LINDSAY  
DAVID LINDSTROM

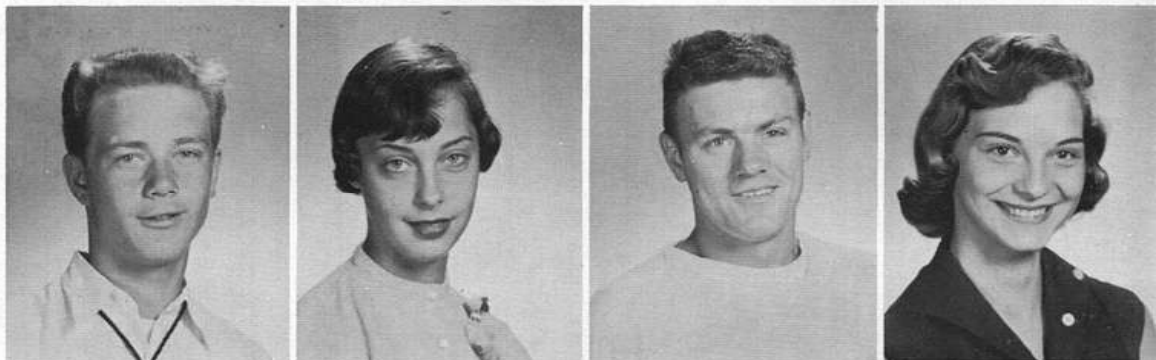


RICHARD LIPPINCOTT  
MARLENE LUSK

DRUSILLA PARK  
BERTELLA PELLICCA  
LEROY PEPPER



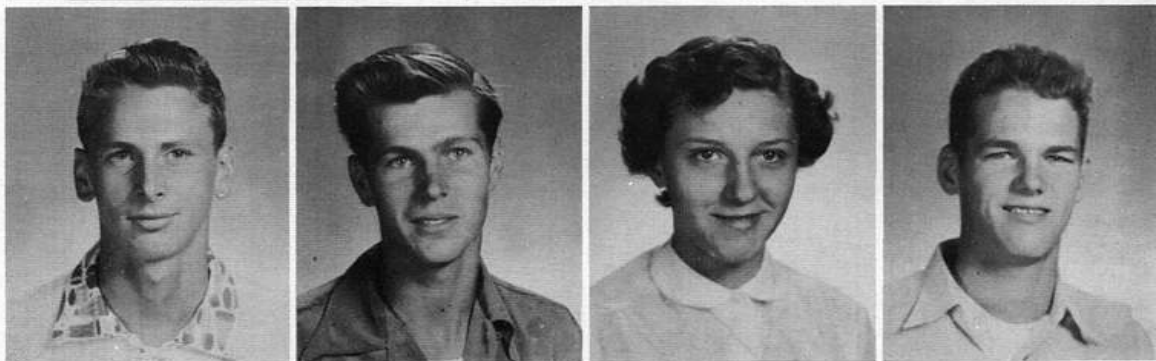
DENNIS PIETKA  
ALVINA POESCHL  
ERVIN POHLMAN  
HELEN POLIMENI



LEONARD QUINLAN  
MARY ANNE RAABE  
GUY RAIL  
JOANNE RASMUSSEN



ROBERT RIEK  
DAVID RULEY  
LUCILLE RYCH  
JOHN SCHUCHARDT



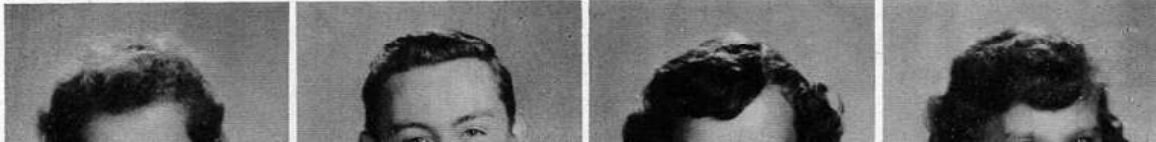
KENNETH SCHUMANN  
JOHN SCHWEDA  
ROGER SHORTALL  
JEROME SKUBA



KA THERINE SMITH  
JUNE SOOS  
KENNETH SPRAGUE  
JUDITH STADE



MARJORIE STALKER



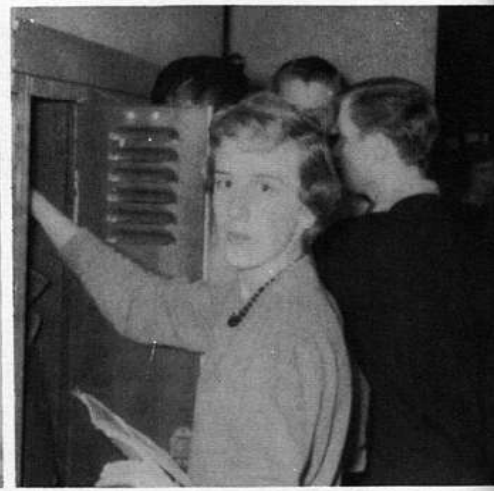


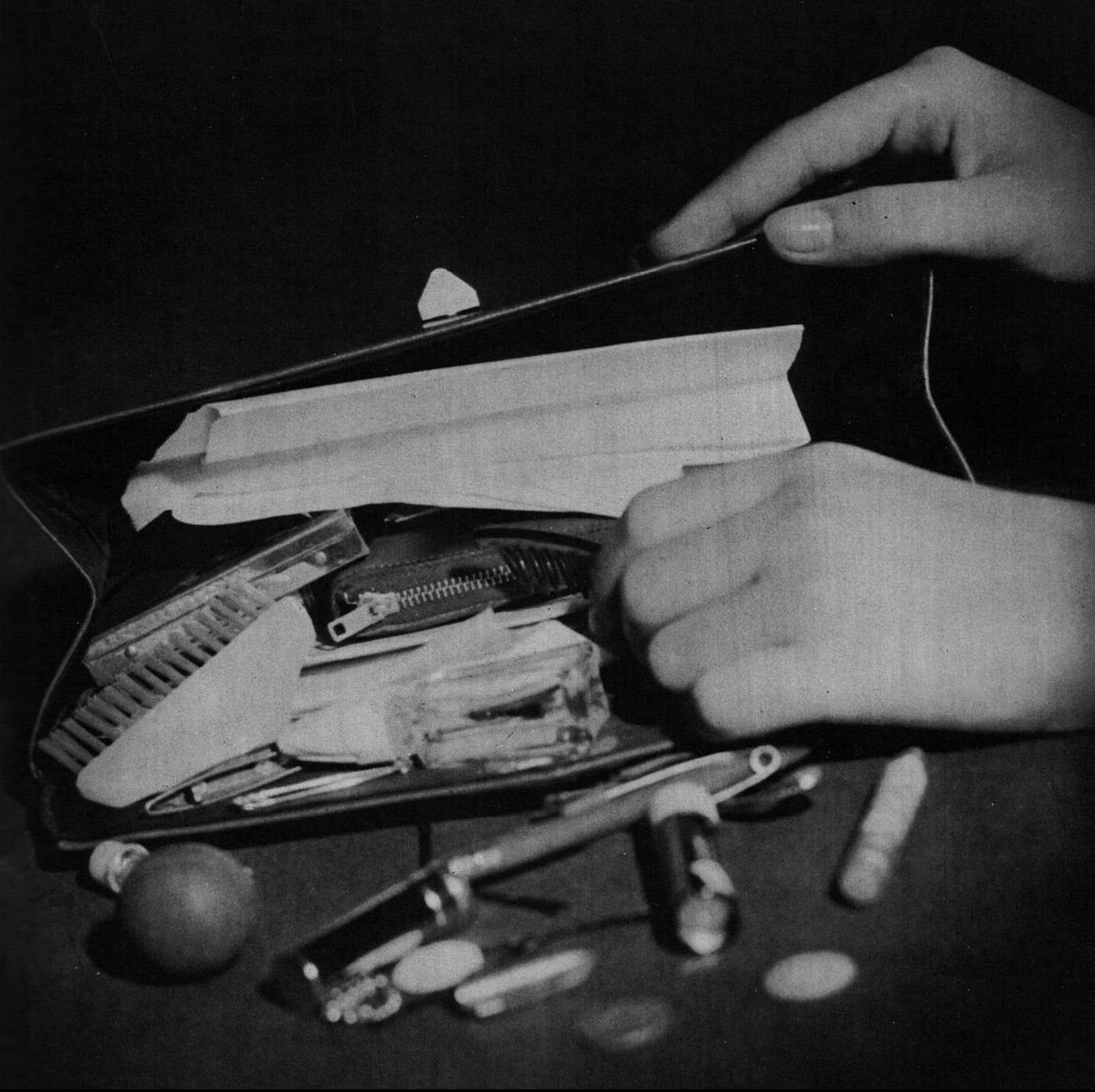
GERTRUDE WAGNER  
 ROGER WAGNER  
 THOMAS WESNER  
 DIANE WILLIS



JOYCE WITRY

Absentee:  
 TODD PAUL  
 JOAN POTTENGER  
 GLEN PRUSIA





# **SOPHOMORES**



President - - - - - Pete Bryant  
 Vice President - - - - - Judy Mell  
 Secretary - - - - - Carolyn Brehm  
 Treasurer - - - - - Marilynn Scheiden  
 Sponsor - - - - - Mr. Machamer

**BOARD MEMBERS**

Larry Stahl  
 Norm Nehmer  
 Sheila Strub  
 Jim Benser

Robert Daly  
 Bonnie Bradish  
 Richard Hanke  
 Ann Gustafson

## CLASS OF 1958

In September elections were held and Pete Bryant came out with the top office, Judy Mell served as vice president, Carolyn Brehm as secretary, and Marilynn Scheiden as treasurer. Jackie Funk, Judy Mell, Jim Moehling, and Pete Bryant were the sophomore representatives on the Student Council.

The sophomores started the year off with a great big bang. Their entry in the Homecoming parade received first prize. At the football games the class sold cocoa for the treasury. After the grind for semester exams was over, the sophs held a raffle with a clock radio for the prize. Their last activity of the school year was a spring semi-formal dance held April 14, in the gym.

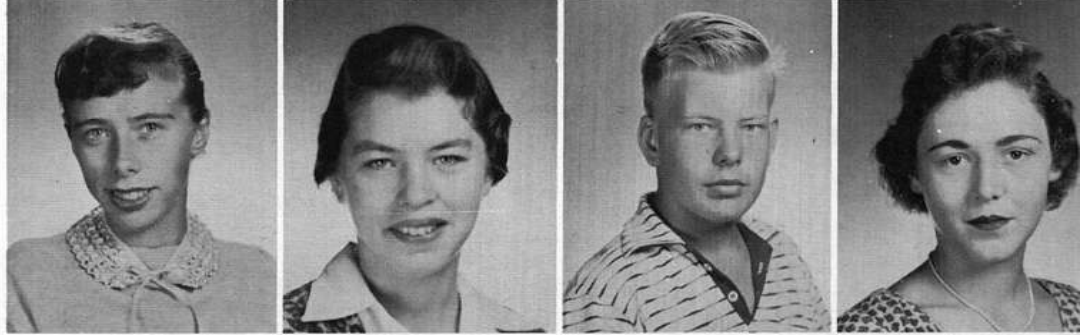
Elaine Altmann  
Philip Bach  
Lawrence Bacz  
Robin Bainbridge



George Bateman  
Charlotte Becker  
James Benser  
Robert Berghorn



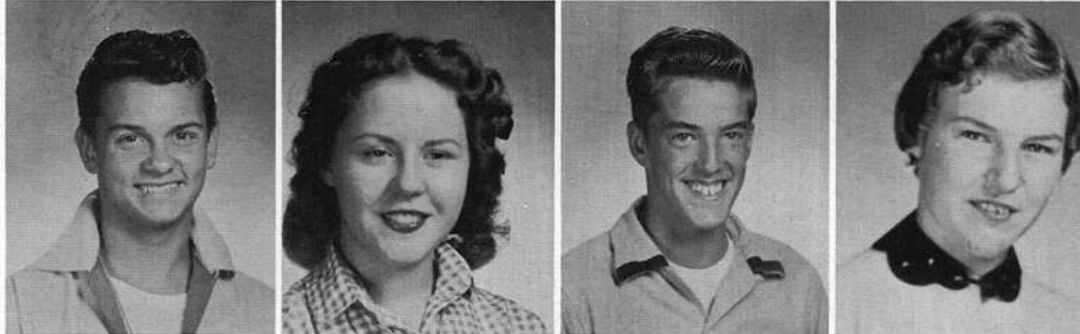
Jonal Borscha  
Bonnie Bradish  
Howard Branding  
Susan Brandt



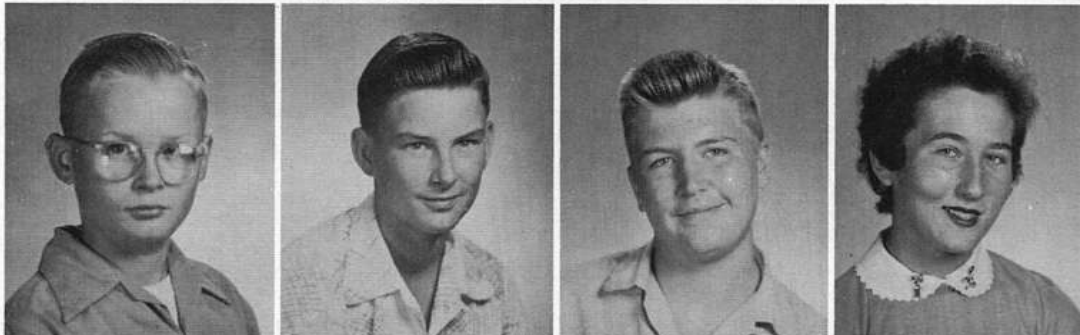
Carolyn Brehm  
Clara Brunning  
Peter Bryant  
Grant Bullock



Robert Daly  
Donna Deppe  
Dennis Eichler  
Linda Emmerich



John Farr  
David Feiereisen  
Ronald Frank  
Jacqueline Funk



John Gleason  
Deborah Goldbogen  
Delmar Groves





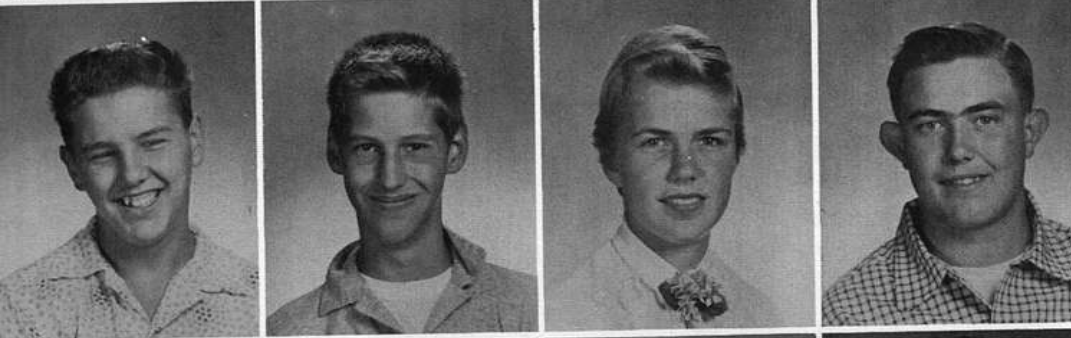
Ralph Halvorsen  
Richard Hanke  
Elmer Hoffmann  
Joy Johnson



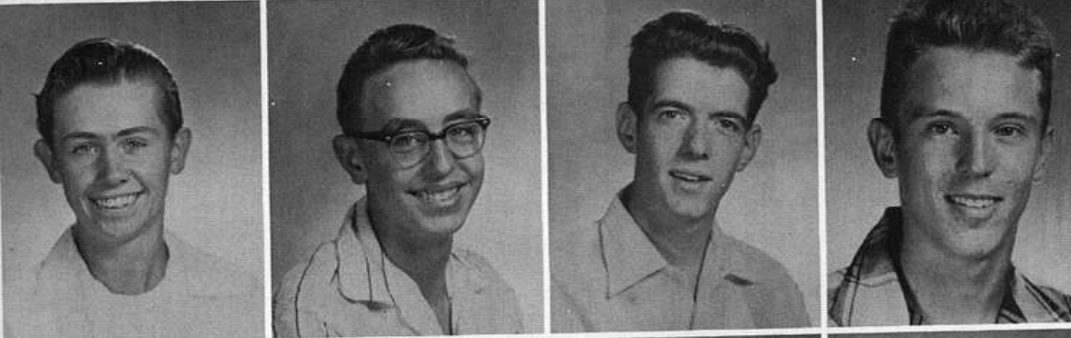
Wanda Kirkendall  
Audrey Knigge  
Spencer Koch  
Louis Koennecker



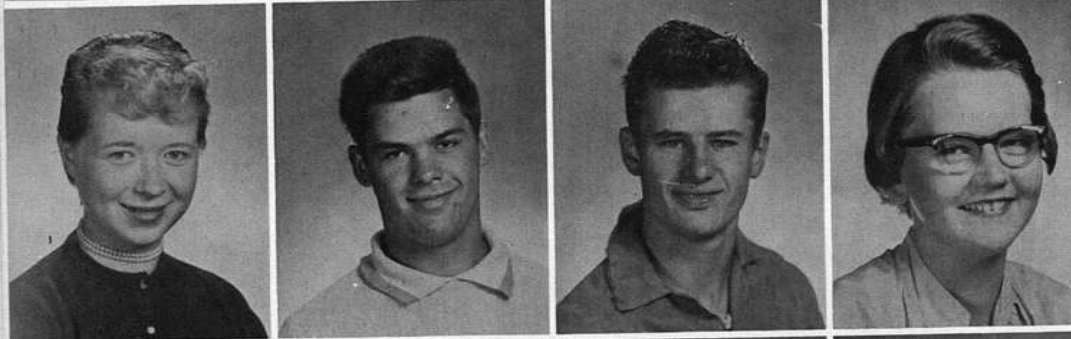
Pamela Kulesza  
Dolores Mantey  
Albert Marcotte  
Bernard Mazu



Terrance McAllister  
David McCloud  
Judith Mell  
Jack Meyer



Richard Middleton  
James Moehling  
Daniel Murphy  
Norman Nehmer



Roberta Nelson  
Robert Nemeth  
Donald Numerowski  
Nancy Rasmussen

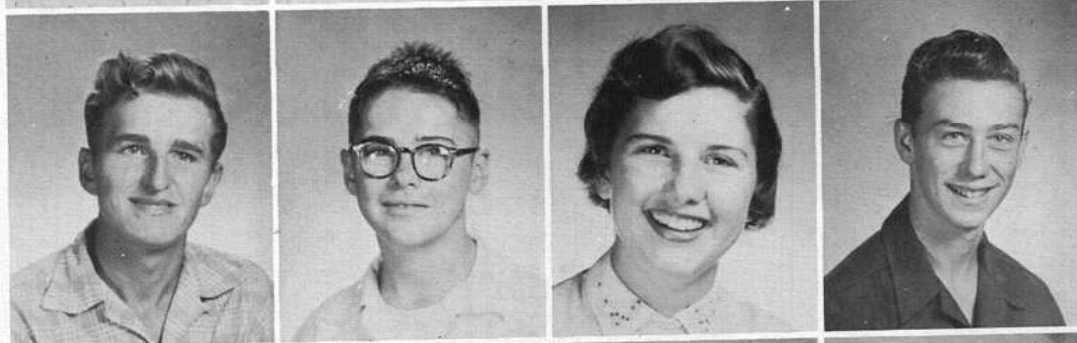


Dorothy Raupp  
Mary Riggs  
Eugene Risi

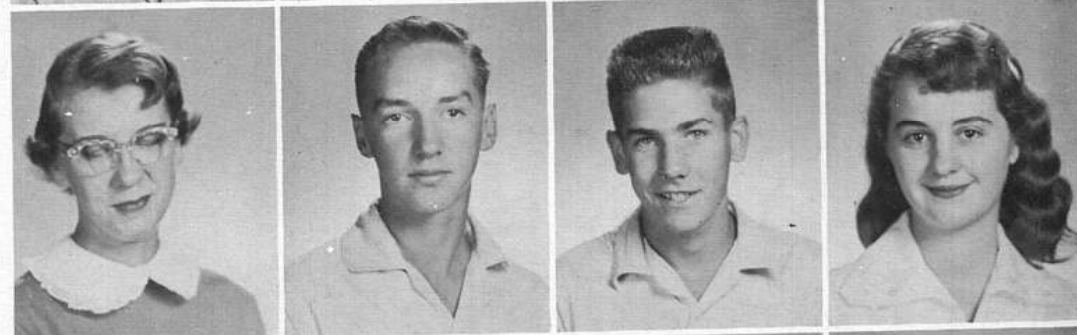
Charles Rohlwing  
 Reginald Rych  
 Donald Scheck  
 Marilyn Scheiden



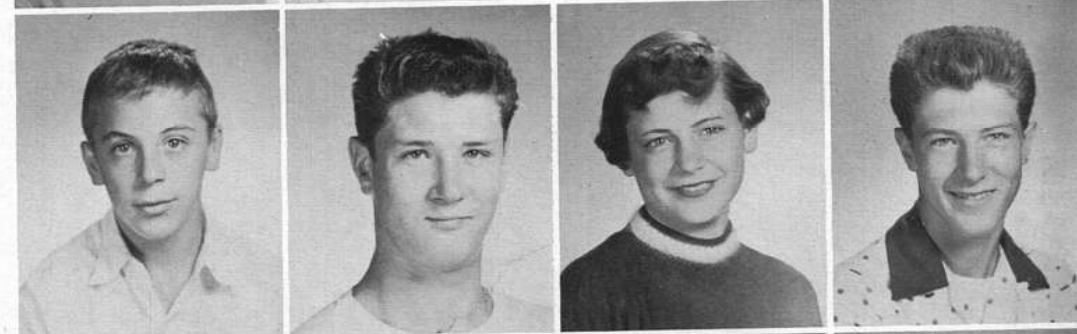
Erick Schoenfisch  
 Donald Seavey  
 Sandra Seby  
 Edward Shortridge



Kathleen Snetsinger  
 Lawrence Stahl  
 Eugene Steinken  
 Sheila Strub



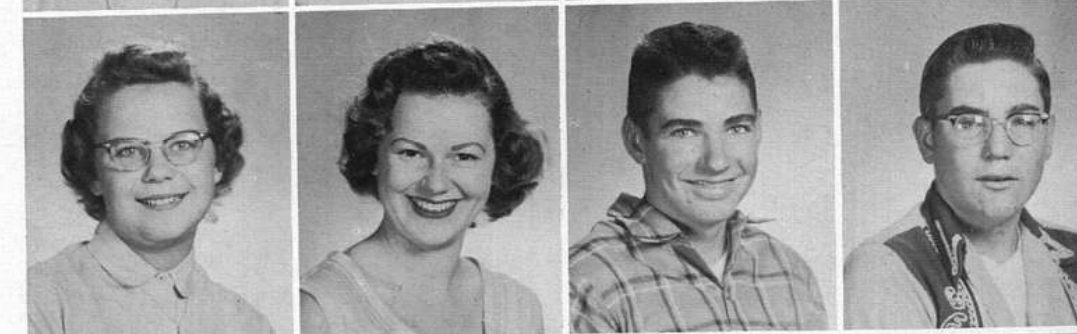
Carl Swichtenburg  
 Harry Tischmann  
 Barbara Tyrrell  
 Howard Vasey



Judith VerHalen  
 Dorothy Voras  
 Linda Voss  
 Judith Welch



Carol Wiese  
 Elizabeth Wilshin  
 Douglas Wilson  
 Wayne Winter

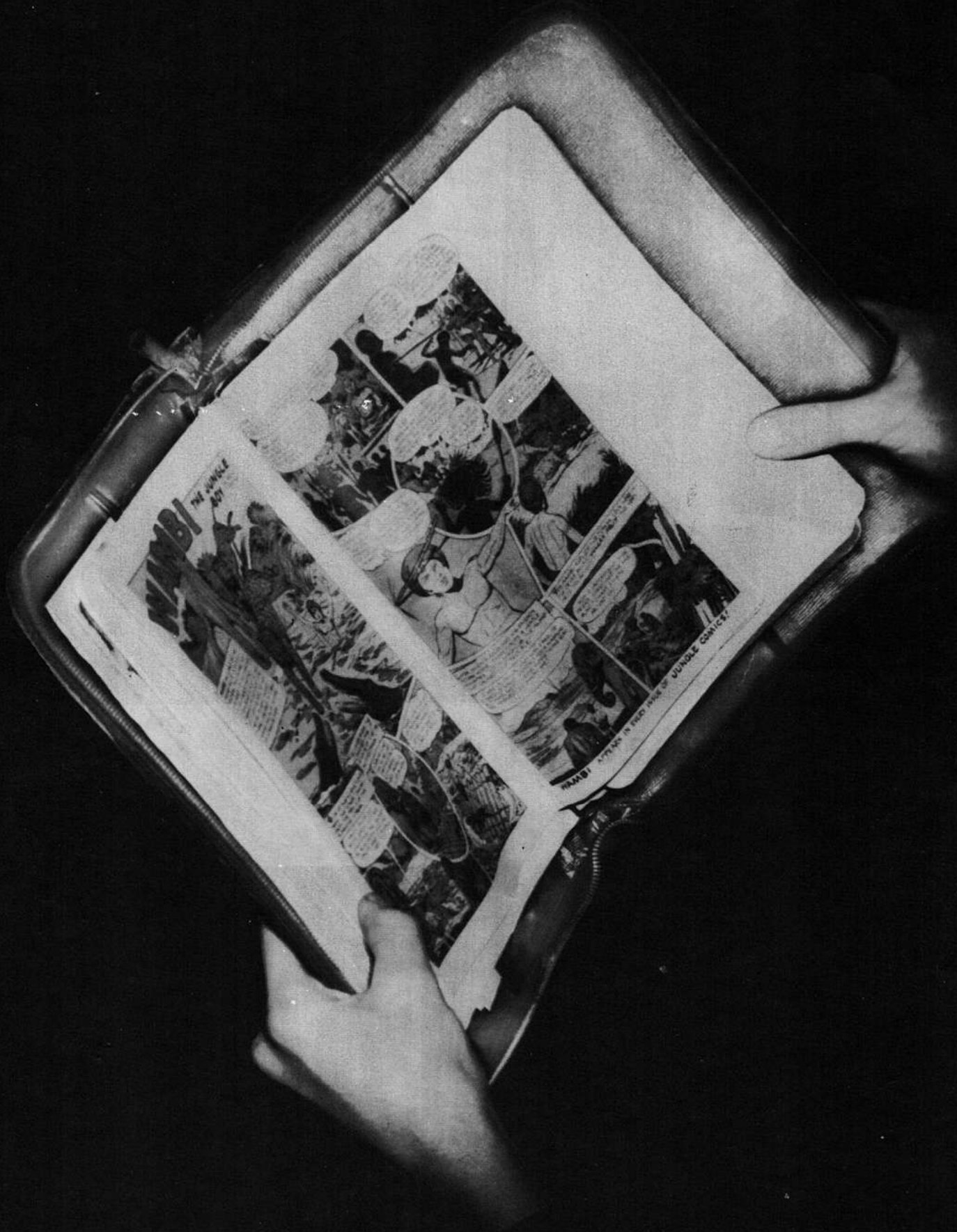


Absentees:  
 Julius Horcher  
 Michael Mueller

Michael Witt  
 Sharon Wolski







**FRESHMEN**



President- - - - - Bill Luerssen  
 Vice President- - - - - Lois Farnar  
 Secretary- - - - - Sue Sullivan  
 Treasurer- - - - - Bill Cohan  
 Sponsor- - - - - Mr. Temple

**STUDENT COUNCIL REPRESENTATIVES**  
 Nan Riley  
 Roberta Ver Halen  
 Richard Williams  
 Philip Stilke

## CLASS OF 1959

The freshmen under the able assistance of Mr. Temple got off to a good start this year. Bill Luerssen was elected president by his fellow classmates. Lois Farnar was selected as vice president, Sue Sullivan was secretary, and Bill Cohan was elected to handle the money matters. The Student Council representatives were Nan Riley, Roberta Ver Halen, Philip Stilke and Richard Williams.

During the basketball season the freshmen sold homemade cookies and candy at the games. They sponsored an April Fool's Dance at school on March 31 and a booth at the Senior Carnival.

William Frohlich  
John Gallagher  
Robert Gerald  
Brooks Gerlach



Lois Farnier  
William Ferguson  
James Fiore  
Richard Fleck  
Charlotte Foote



Harold Draper  
James Dwyer  
George Eckart  
John Emmerich  
Judith Erhardt



Richard Chvojka  
William Cohan  
Peter Coleman  
Frank Dawson  
Frank Demuth



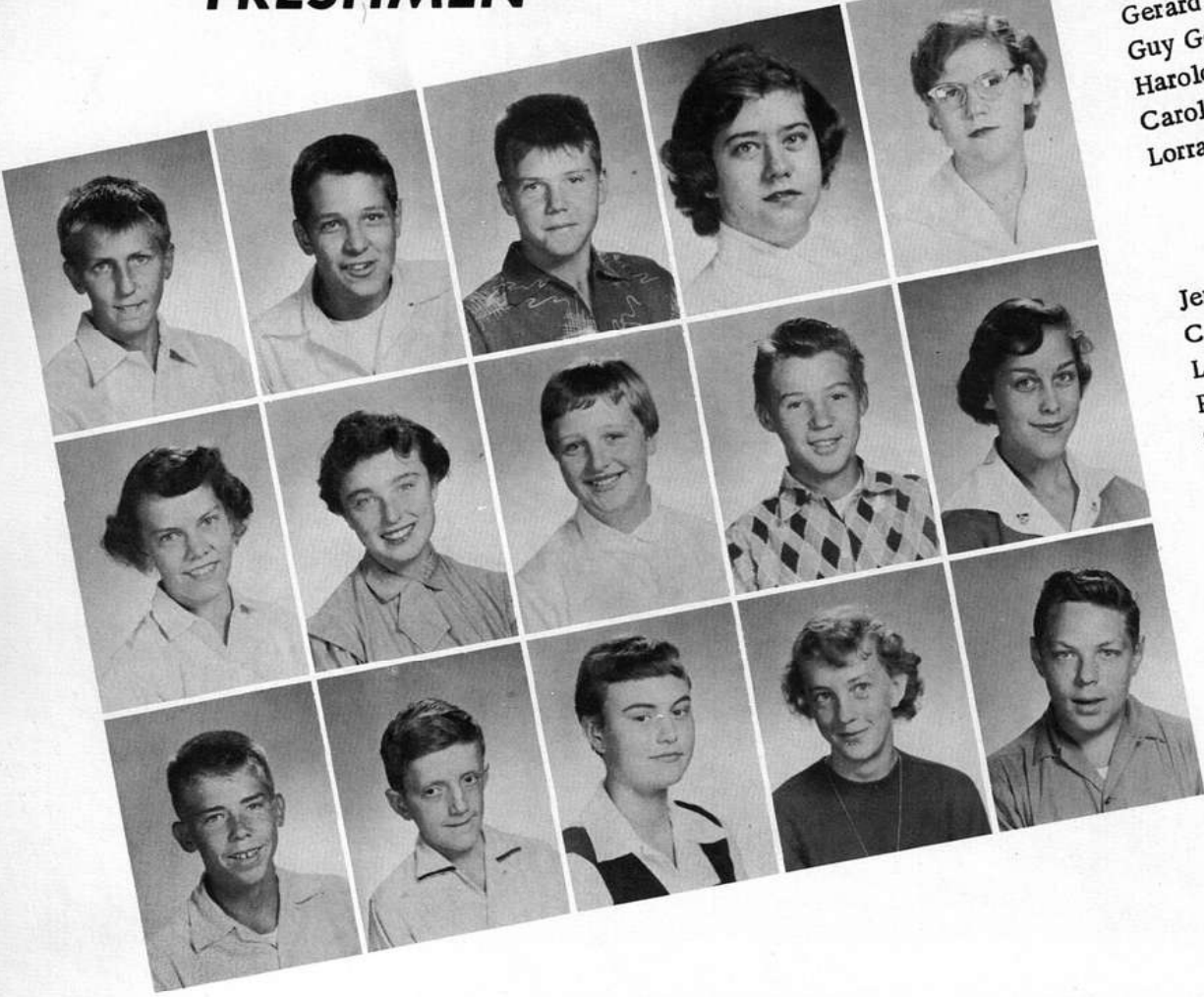
Richard Bodine  
Cynthia Brannum  
David Brown  
Henry Burke  
Edward Christensen

Peter Barkules  
Clifford Benjamin  
Daniel Bergman  
Lorene Bleile  
Henry Blume

Howard  
Frankie Alred  
William Balle  
Penelope Barg



FRESHMEN

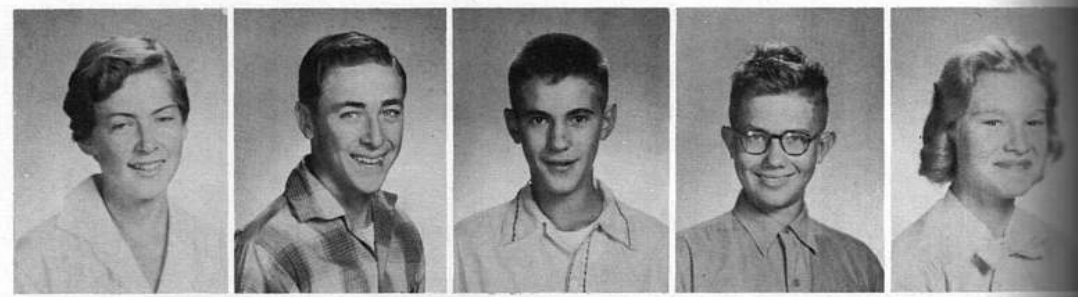


Gerard  
Guy Goracio  
Harold Greisz  
Carolyn Guthrie  
Lorraine Harting

Jeri Held  
Carol Hurley  
Lynne Hurley  
Robert Jahnke  
Sonja Jensen

Robert Joneson  
Lawrence Knigge  
Barbara Kuhl  
Bertha Lewis  
Lance Lindstrom

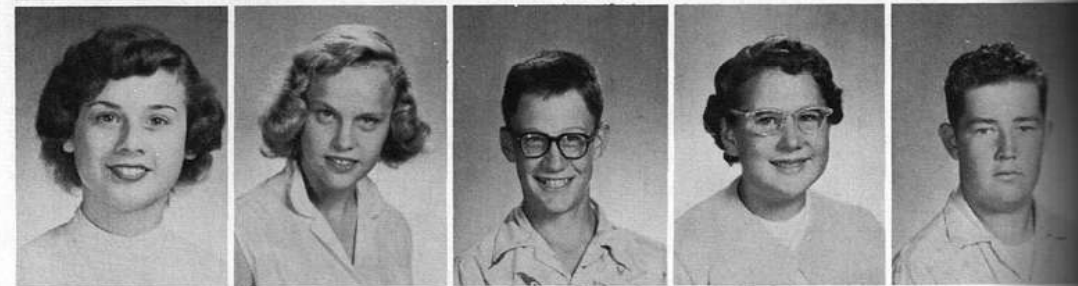
Sally Loeschen  
Robert Ludwig  
William Luerssen  
James Manlove  
Loretta Marko



Gail McCloud  
Loretta Mecklenburg  
Diane Meier  
Robert Mionske  
Carol Morey



Phyllis Mueller  
Rosina Mueller  
William North  
Arlene Numerowski  
Ray Olson



Gary Oswald  
Howard Palmer  
Daniel Park  
William Pauer





RICHARD  
 Nan Riley  
 Patricia Risoluti  
 Ronald Robb

Santos Romero  
 Eugene Ruley  
 Carol Salmen  
 Agnes Sasse  
 Alvin Sasse

Martha Schoenfisch  
 Dennis Schultz  
 Karen Schumann  
 Hallis Simpson  
 Judy Sirois

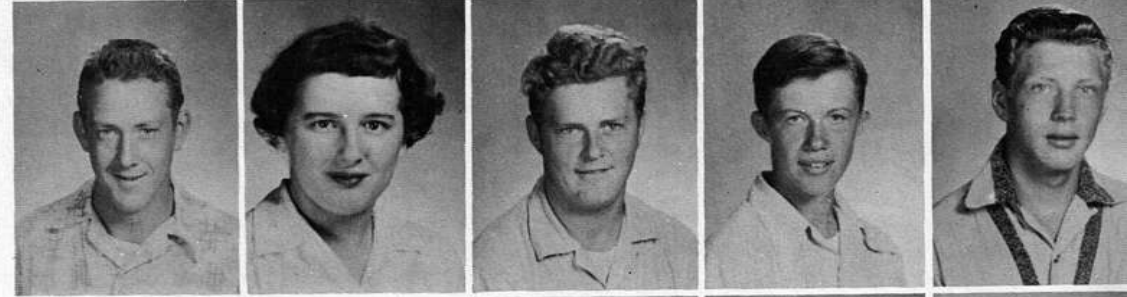
Sandra Skinner  
 Anita Stanley  
 Philip Stilke  
 John Sturm  
 Sue Sullivan



Ruth Surma  
 Patricia Thurlwell  
 William Turek  
 Roberta VerHalen  
 Charles Volling



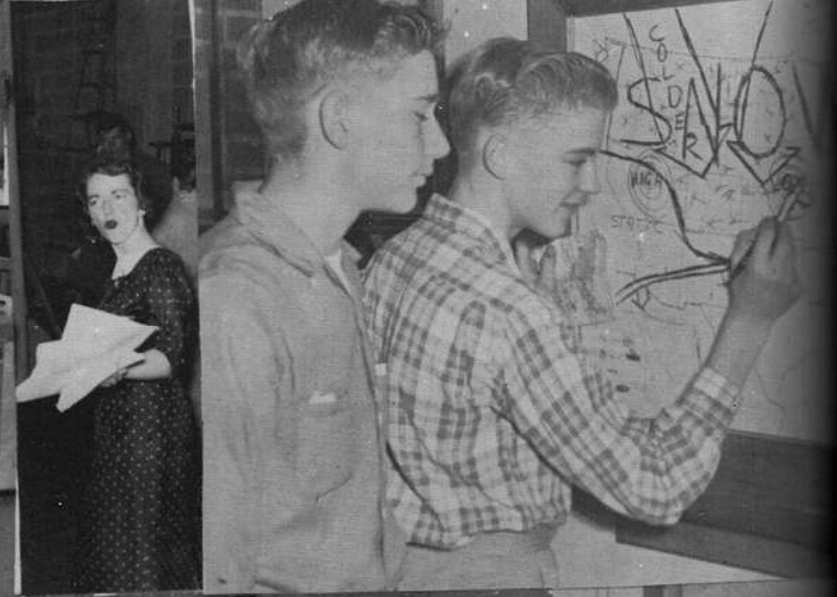
William Waddle  
 Rita Wagner  
 David Weber  
 Earl Wegner  
 David West



Absentees:  
 William Fischer  
 Thomas Kleiner  
 David McAllister  
 Grant Oberg  
 John Pennington

Sherry Wilcox  
 Richard Williams





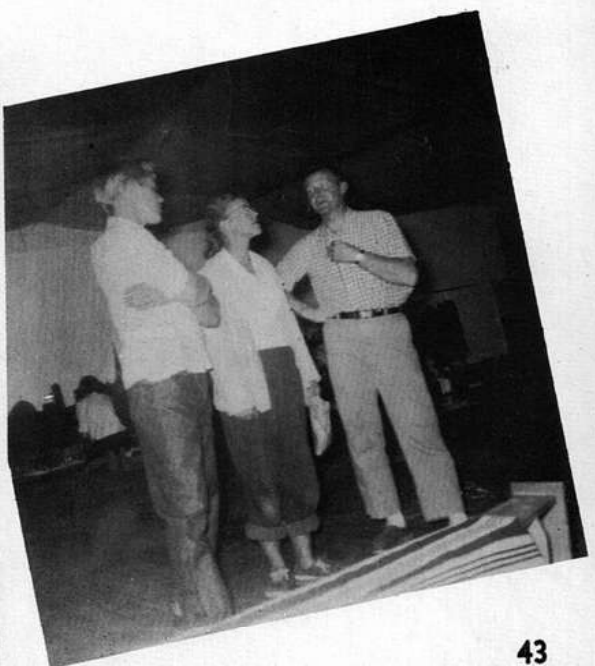


**ACTIVITIES**



## **JUNIOR PROM, MAY 14, 1955**

The Prom is given each year by the juniors in honor of the senior class. Last year the theme of the Prom was "An Evening in Paris". The music was supplied by Vern Perry and his orchestra. Reigning over the festivities were Queen Mary Jean Anson and King Louis Risi.







## 1955 HOMECOMING

Marilyn Brehm reigned as queen of the 1955 Homecoming activities. Ela-Vernon's football team bowed to Grayslake, but music by the Glo-notes soothed the pains of defeat, and all enjoyed themselves at



**"MEN ARE LIKE STREETCARS."**



**SNOWBALL, 1955**

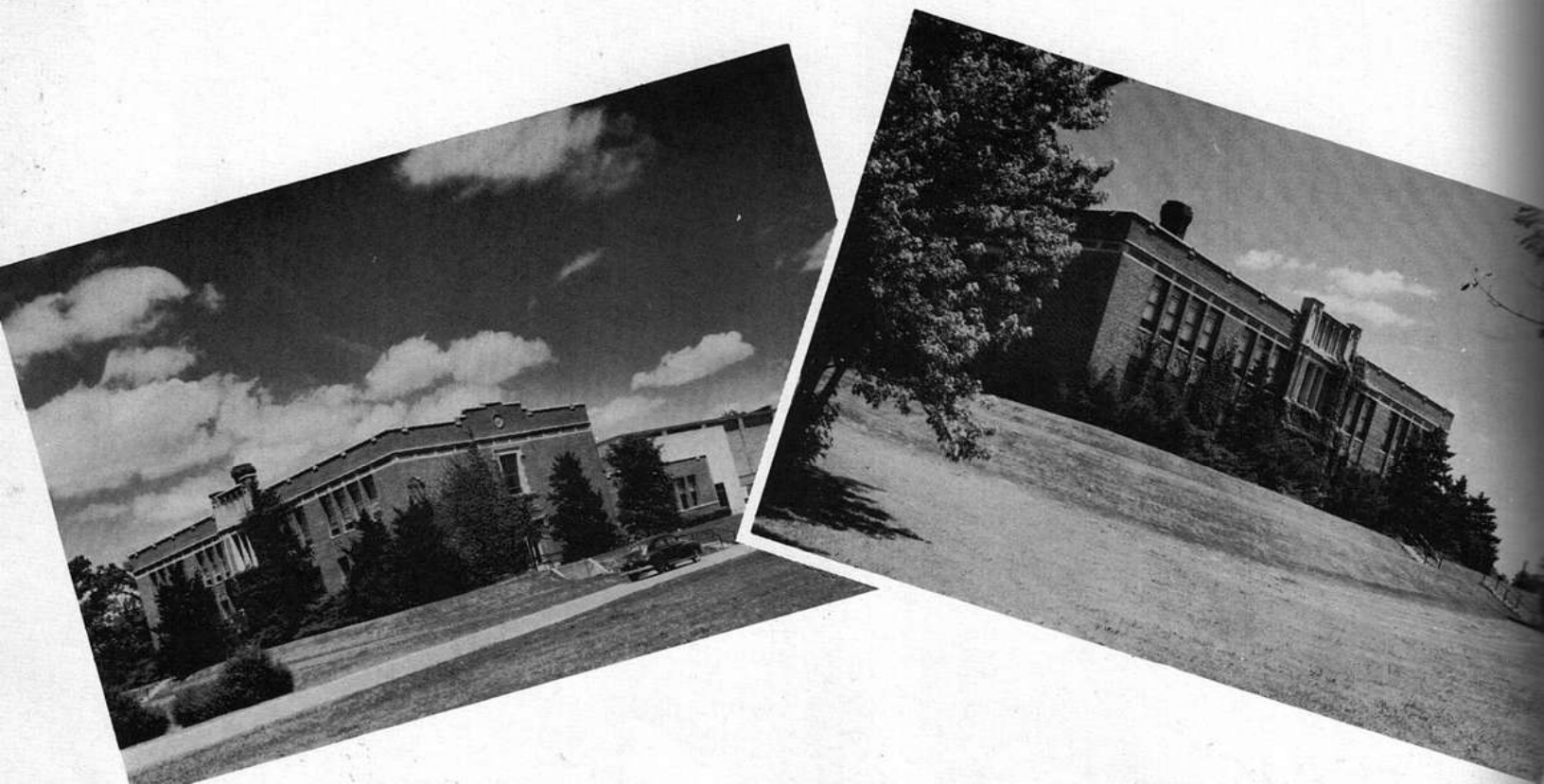


**TURNABOUT, 1956**





## **SPRING AT ELA-VERNON**





**ATHLETICS**



Back row: Coach Eide, D. Walsh, T. Leikam, N. Jesse, L. Becker, D. Leikam, J. Gross, J. Meyer, Manager. Front row: R. Meyer, E. Deppe, B. Stalker, F. Keough, T. Wesner.

## VARSIY BASEBALL 1955

E-V	4	Grant	6	E-V	5	Grant	7
E-V	5	Glenbrook	4	E-V	4	Glenbrook	14
E-V	1	Palatine	4	E-V	7	Grayslake	10
E-V	0	Wauconda	1	E-V	1	Wauconda	8
E-V	0	Grayslake	6	E-V	6	Bensenville	3
E-V	1	Bensenville	3	E-V	0	Antioch	4
E-V	11	Antioch	5	E-V	6	Palatine	5

Won 4 Lost 10

Batting Champ:

Bruce Stalker .425

## FROSH-SOPH BASEBALL



Back row: G. Ingles, P. Light, J. Buciak, C. Gilman, B. Nemeth, N. Nehmer.

Front row: R. Brame, R. Halver-son, P. Eichler, G. Risi, R. Lippincott.



Back row: R. Hanke, R. Schuchardt, B. Diduch, R. Bodine, A. Mattson. Front row: R. Obenauf, L. Risi, L. Bacz, R. Soos, V. Bugner.

## 1955 VARSITY TRACK

## 1956 ALL-CONFERENCE FOOTBALL

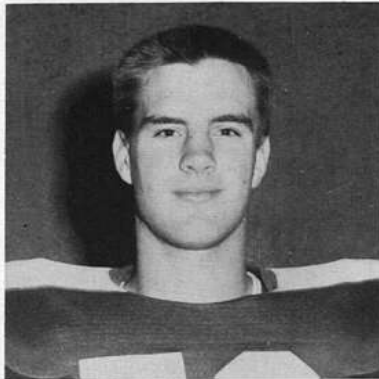
Left to right: C. Gilman, L. Bathrick, R. Soos, P. Light.



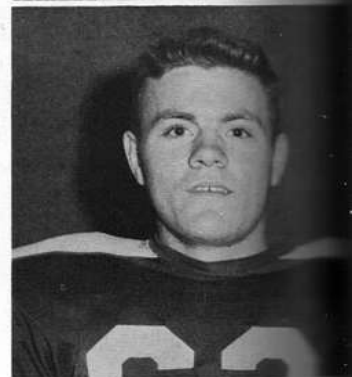
# VARSITY FOOTBALL 1955



B. BENSON  
A. BATHRICK  
K. STANCIU



L. BATHRICK  
R. SOOS

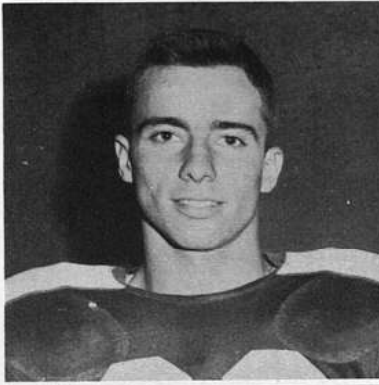


T. BINZEL  
J. PAVLOVICH  
E. POHLMAN

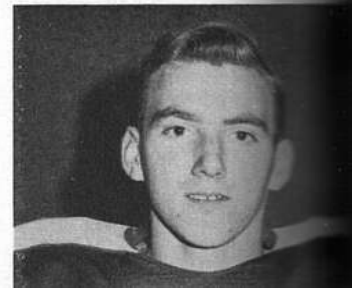
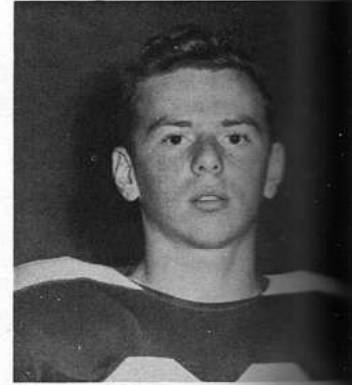
J. EMMERICH  
T. LEIKAM



C. GILMAN  
P. LIGHT



T. WESNER  
T. BREHM



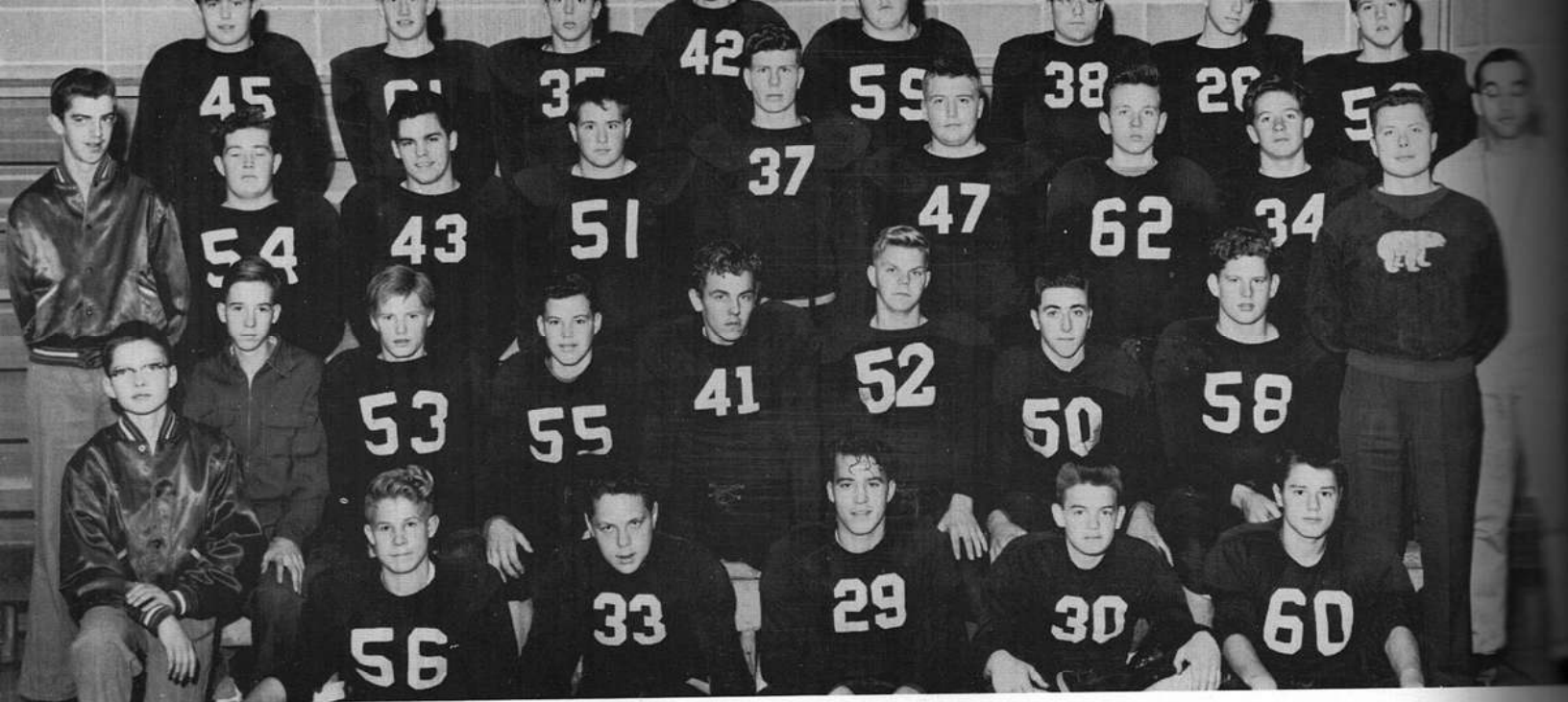


Back row, left to right: L. Pepper, Manager; R. Moore, A. Bathrick, P. Light, D. Schwegel, T. Wesner, T. Binzel, E. Pohlman. Third row: Mr. Ladd, Assistant Coach; L. Bathrick, J. Emmerich, S. Horcher, N. Jesse, T. Leikam. Second row: K. Schumann, Manager; T. Brehm, F. Keough, C. Gilman, R. Benson, E. Deppe, Mr. Lehmann, Varsity Coach. Front row: R. Lippincott, J. LaVoise, R. Soos, K. Stanciu, G. Rail.

E-V	21	Round Lake	0
E-V	0	Antioch	14
E-V	12	Wauconda	7
E-V	6	Grayslake	12
E-V	20	Grant	0
E-V	7	Palatine	7
E-V	19	Glenbrook	31
E-V	13	Fenton	7

Season's Record Won 4 Lost 3 Tied 1

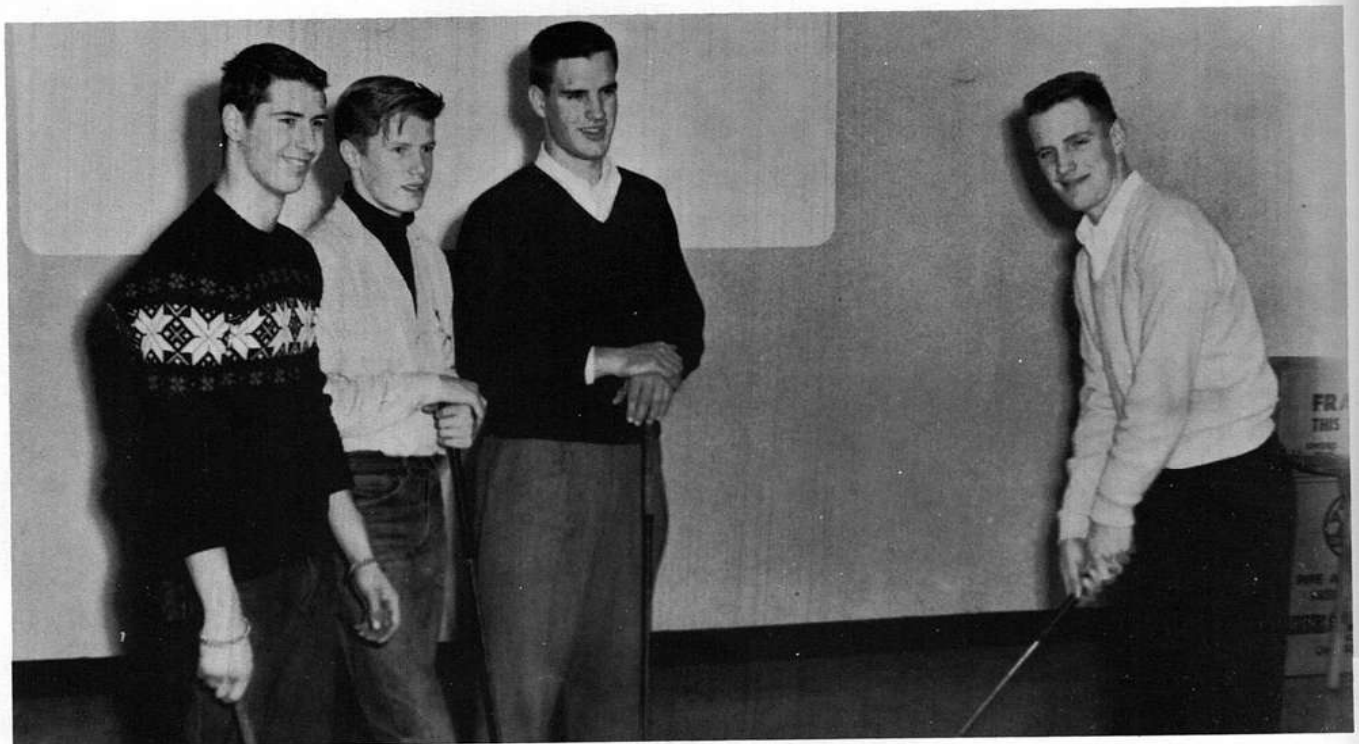




## FROSH-SOPH FOOTBALL, 1955

Back row, left to right: J. Meyer, W. North, N. Nehmer, R. Joneson, D. Weber, W. Winter, W. Cohan, H. Greisz. Third row: L. Pepper, Manager; R. Olson, R. Nemeth, G. Bullock, J. Gallagher, R. Frank, D. Bergman, L. Konnecker, T. Meyer, Coach. Second row: K. Schumann, Manager; R. Halvorsen, R. Bodine, G. Bateman, R. Chvojka, R. Ludwig, B. Berg, G. Greene, Assistant Coach. Front row: R. Gerald, Manager; H. Allen, E. Lindstrom, J. Benser, R. Robb, E. Risi.

E-V	12	Antioch	7	E-V	8	Grant	0
E-V	18	Wauconda	6	E-V	0	Glenbrook	7
E-V	6	Fenton	14	E-V	0	Palatine	26
E-V	12	Grayslake	7				



## GOLF, 1955



Back row, left to right: G. Oswald, W. Luerssen, W. Ballee, Manager; W. Dwyer, W. Cohan, G. Eckart. Second row: Mr. Meyer, Coach; J. Fiore, D. Eichler, R. Berghorn, H. Vasey, D. Park, R. Robb. Front row: C. Benjamin, D. Bergman, J. Gallagher, D. Wilson, E. Steinken.

SCORE	OPPONENT	SCORE	E-V	SCORE	OPPONENT	SCORE
45	Maryville	55	E-V	38	Fenton	49
58	North Chicago	44	E-V	28	Antioch	42
56	Geneva	32	E-V	54	Grant	43
29	Lake Forest	24	E-V	46	Palatine	31
42	Grant	21	E-V	48	Glenbrook	52
36	Glenbrook	43	E-V	41	Grayslake	42
46	Palatine	34	E-V	56	Wauconda	31
43	Grayslake	38	E-V	37	Libertyville	56
29	Wauconda	38	E-V	39	Fenton	66
34	Warren	29	E-V	36	Mooseheart	47
26	Zion-Benton	34	E-V	45	Antioch	47
54	Maryville	48	E-V			

Won 7

Lost 16



## FRESHMEN

Back row, left to right: W. Ballee, Manager; D. Park, W. Cohan, D. Bergman, C. Benjamin, W. Dwyer, Mr. McCartney, Coach. Front row: G. Eckart, W. Luerssen, R. Robb, J. Fiore, G. Oswald.

Won: 6

Lost: 9



Back row, left to right: R. Brame, T. Wesner, C. Gilman, E. Pohlman, J. Buciak. Second row: Mr. Ladd, Coach; R. Kreuser, N. Jesse, J. Schuchardt, R. Boe, J. Meyer, Manager. Front row: L. Bathrick, K. Stanciu, A. Bathrick, L. Becker, R. Soos, R. Meyer.

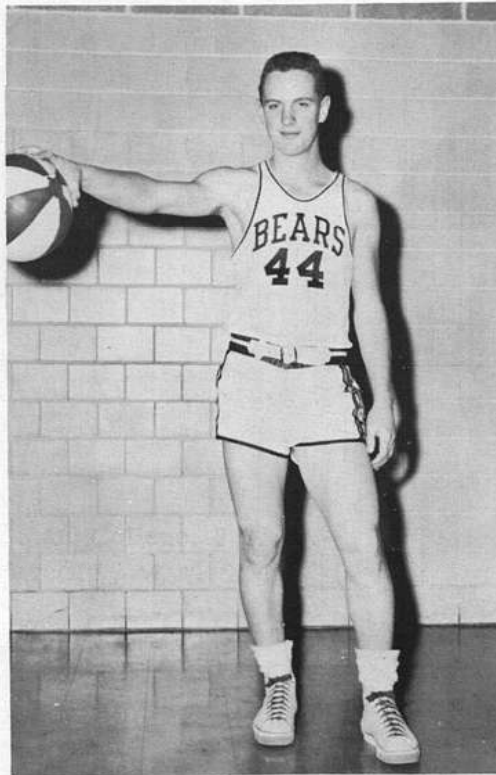
E-V	75	Maryville	59	E-V	70	Fenton	67
E-V	72	North Chicago	64	E-V	70	Antioch	65
E-V	46	Geneva	78	E-V	48	Grant	42
E-V	32	Lake Forest	46	E-V	54	Palatine	43
E-V	68	Grant	61	E-V	43	Glenbrook	57
E-V	78	Glenbrook	67	E-V	82	Grayslake	72
E-V	67	Palatine	49	E-V	57	Wauconda	50
E-V	66	Grayslake	62	E-V	50	Libertyville	48
E-V	50	Wauconda	56	E-V	66	Fenton	73
E-V	53	Warren	56	E-V	70	Mooseheart	85
E-V	66	Zion-Benton	70	E-V	68	Antioch	67
E-V	66	Maryville	68				

Won 14

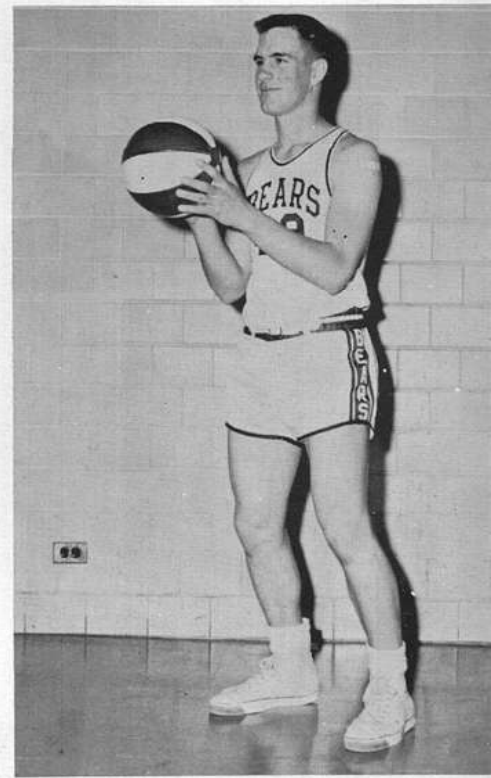
Lost 9



R. MEYER

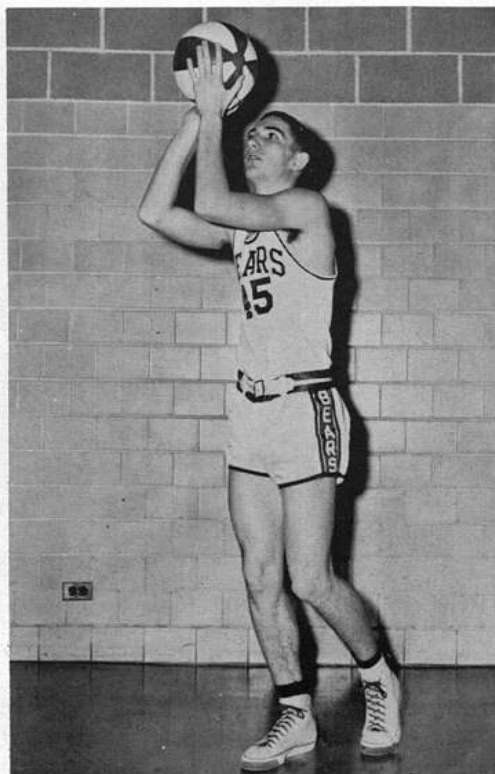


A. BATHRICK  
Co-Captain  
All-Conference



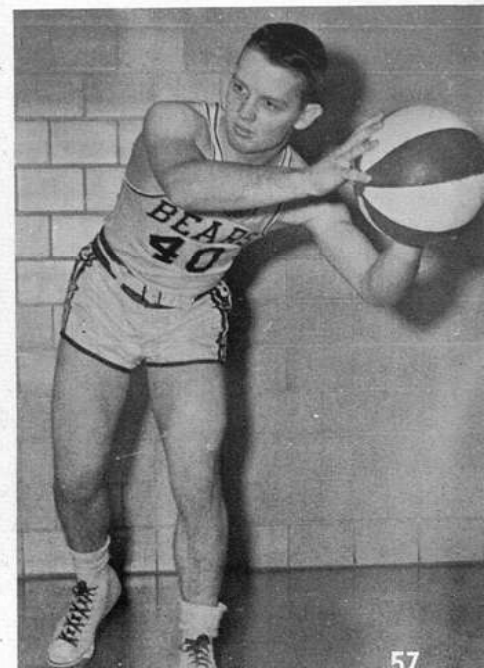
L. BATHRICK

K. STANCIU



L. BECKER  
Co-Captain  
All-Conference

R. SOOS





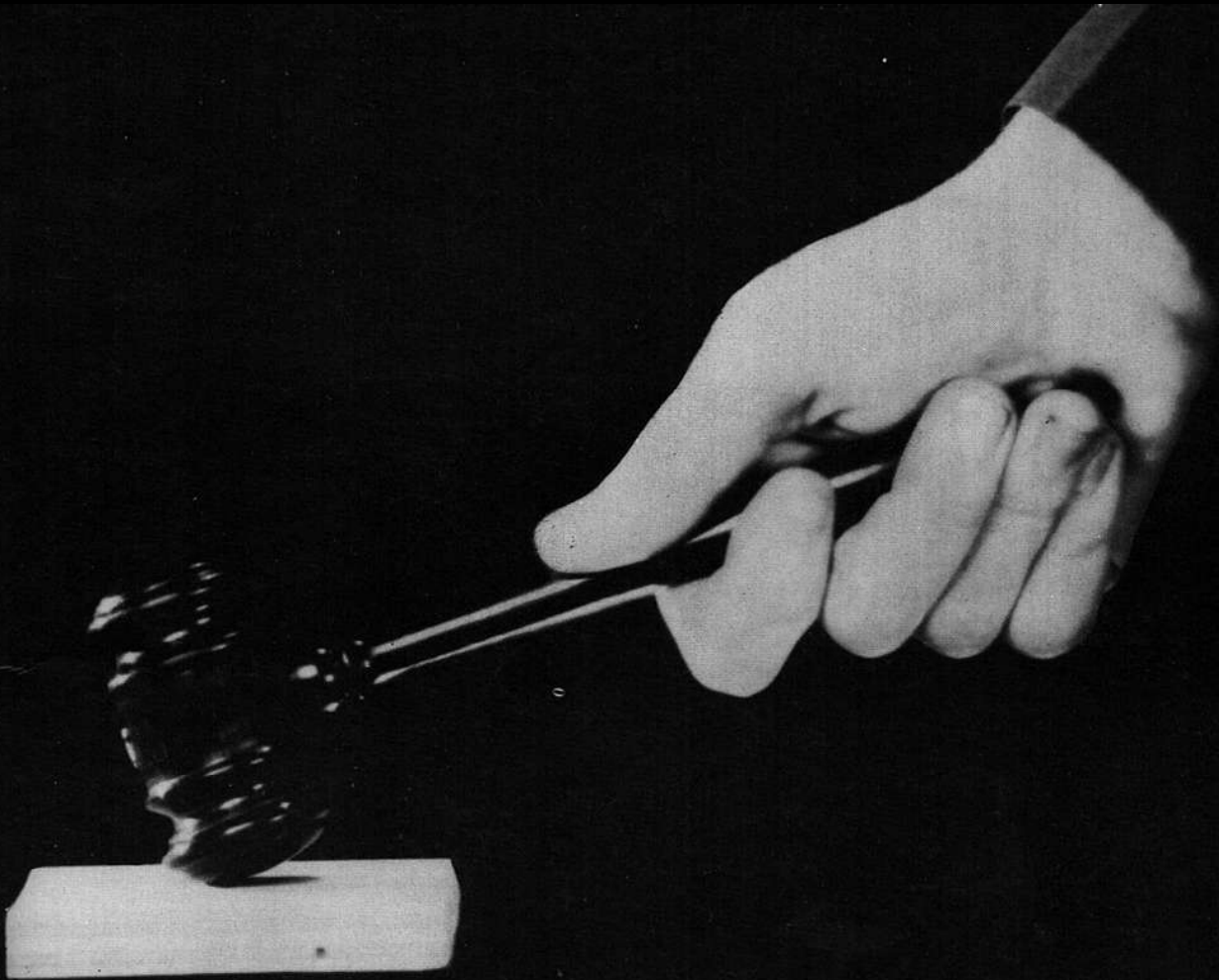
Left to right: K. Gustafson, S. Gregory, C. Dyback, E. Iverson, M. Brehm.

## **VARSITY CHEERLEADERS**

## **FROSH-SOPH CHEERLEADERS**



Left to right: J. Mell, S. Sobhy, A. Gustafson, C. Benum, M. Scheiden



**ORGANIZATIONS**



## STUDENT COUNCIL

Standing, left to right: K. Buerger, Vice President; E. Pohlman, Treasurer; Miss Jacquat, Sponsor; J. Mell, J. Funk, N. Riley, P. Bryant, P. Stilke, R. Williams, R. VerHalen. Seated: A. Sheehan, President; L. Anderson, Secretary; W. Ward, C. Anderson, A. Poeschl, R. Riek.



## PHOTOGRAPHY CLUB

Top row, left to right: T. Oswald, P. Metzler, L. Pepper, B. Bremer, K. Buerger, F. Fischer, R. Moore, R. Riek. Second row: R. Hanson, N. Necker, A. Sheehan, K. Schumann, J. Sirois, A. Numerowski, J. Wilmes, Mr. Lehmann, Sponsor; J. LaVoise. Seated: C. Christensen, F. Jankowski.

## PEP CLUB

Left to right: P. Light,  
Secretary-Treasurer; E.  
Iverson, Vice President;  
Mr. Will, Sponsor; M.  
Brehm, President.



## E-V CLUB



Top row, left to right: S. Horcher, N. Jesse, T. Leikam, L. Becker, R. Benson, R. Bodine, J. Pavlovich.  
Third row: C. Gilman, F. Keough, R. Moore, L. Pepper, D. Schwegel, J. Meyer, R. Soos. Second  
row: J. Fenner, T. Ong, A. Bathrick, K. Stanciu, E. Deppe, E. Pohlman. Bottom row: Mr. Ladd,  
Sponsor; L. Bathrick, President; P. Light, Vice President; T. Wesner, Secretary; R. Meyer, Treasurer.

## BEAR FACTS



First row, left to right: Mr. Will, Sponsor; K. Brown, C. Jones. Second row: D. Park, Editor-in-Chief; F. Jankowski, D. Petrakovitz, K. Gustafson, Business Manager; M. Warsaw, C. Meyer. Third row: Laverne Uutala, M. Stalker, J. Soos, P. Thurwell, C. Lindsay, H. Swichtenburg, J. Borucki, A. Forgette, J. Goudie. Fourth row: D. Grever, M. Altmann, S. Dressen, J. Rasmussen, M. Lusk, A. Gustafson, S. Sebby, Lorraine Uutala.

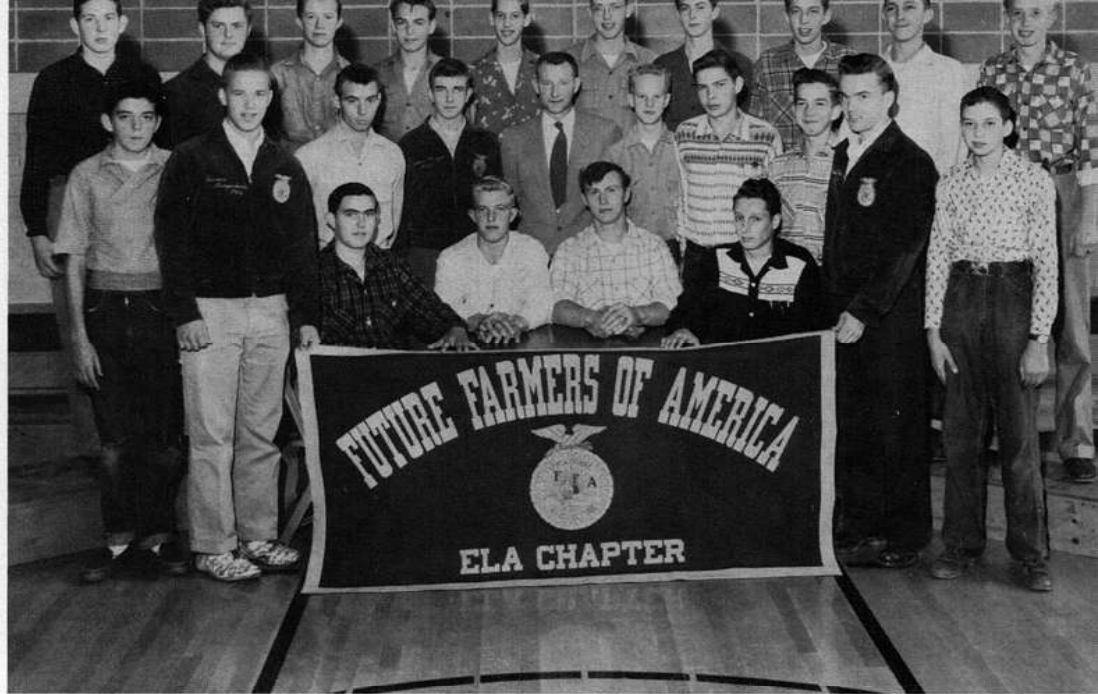
## DRAMATIC CLUB



SPONSORS: Miss Cleary and Miss Scheidker.

OFFICERS: M. Miller, President; P. Kulesza, Vice President; S. Masson, Secretary; D. Adams, Treasurer.

Seated, left to right: J. Meyer, Treasurer; T. Binzel, Vice President; C. Wegner, President; R. Wagner, Secretary. First row: C. Volling, W. Langenbach, R. Obenauf, W. Kreuger, Mr. Allen, Sponsor; J. Gleason, H. Palmer, H. Blume, R. Hanke, J. Sturm. Second row: S. Koch, D. Weber, E. Wegner, P. Bach, D. McCloud, R. Kaden, D. Schumacher, T. Kleiner, G. Eichmann, R. Moehling, Reporter.



## F.H.A.



Seated, left to right: M. Riggs, P. Wrosch, Parliamentarian; M. Stephen, Secretary; C. Jones, First Vice President; D. Petrakovitz, President; W. Ward, Second Vice President; K. Snetsinger, Treasurer; F. Allred, P. Barg. Second row: Miss Bergquist, Sponsor; G. Wagner, S. Gordley, P. Mueller, M. Raabe, L. Anderson, D. Raupp, D. Mantey, C. Weise, N. Holst, R. Wagner, C. Salmen, A. Stanley. Third row: Lorraine Uutala, C. Guthrie, W. Kirkendall, S. Howard, D. Voras, J. Rasmussen, D. Grever, J. Funk, C. Christensen, Laverne Uutala, M. Warsaw, J. Welch, L. Hurley, S. Wilcox.

## CHORUS



First row: left to right; A. Olson, Accompanist; C. Jones, Vice President; S. Strub, President; A. Forgette, Secretary; Mrs. Smeby, Director. Second row: C. Salmen, J. Stade, S. Craig, S. Sullivan, C. Guthrie, P. Risoluti. Third row: N. Riley, S. Jensen, H. Simpson, D. Mier, G. Held, P. Giese, L. Rych.

## BAND



First row: left to right: A. Olson, President; R. Bainbridge, D. Goldbogen, Treasurer; S. Skinner, D. Park, Secretary. Second row: N. Rasmussen, K. Snetsinger, W. North, R. Olson, P. Coleman, R. Riek, R. Robb. Third row: P. Kulesza, S. Sebby, Librarian; D. Berghorn, Vice President; G. Bullock, F. Fischer, D. Park, D. Murphy. Fourth row: R. Rych, R. Shortall, P. Eichler, A. Stanley, G. Stanton, Uniform Manager; W. Langenbach, Mr. Lantz, Director.

First row: left to right: J. Farr, D. Petrakovitz, B. Wilshin, C. Wiese, S. Masson, M. Stephen, L. Anderson, K. Smith.  
 Second row: Mr. Wesner, Sponsor; A. Olson, C. Christensen, B. Gerlach, J. Mell.



## G.A.A.



KARIN GUSTAFSON- - - - - President  
 WILMA WARD- - - - - Vice President  
 \_\_\_\_\_ Secretary

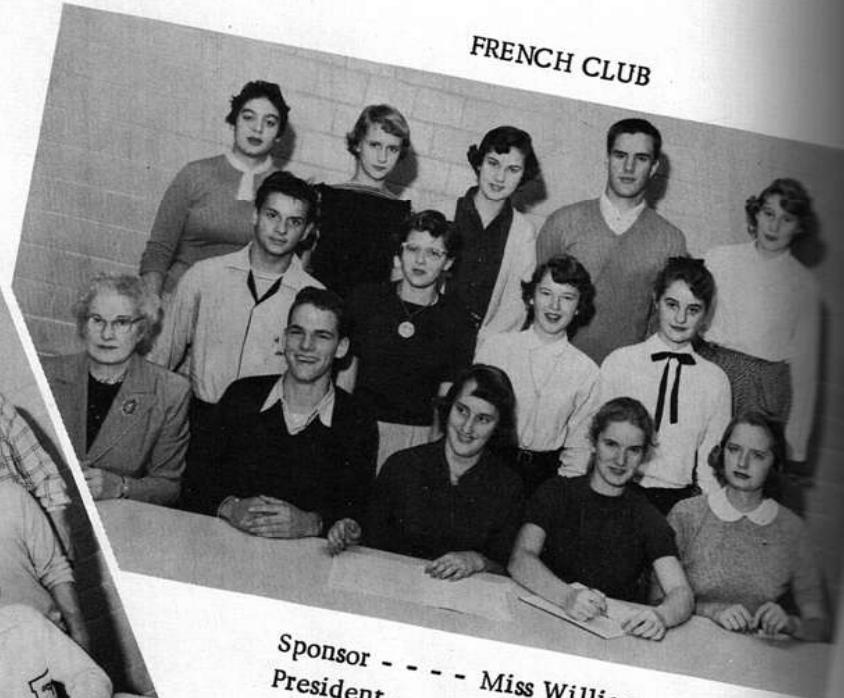
SPANISH CLUB

Sponsor - - - - Miss Williamson  
President - - - - Kurt Buerger  
Vice President - -Chuck Gilman  
Secretary - - - - Marty Miller  
Treasurer - - - - Suzy Gregory



FRENCH CLUB

Sponsor - - - - Miss Williamson  
President - - - - Karin Gustafson  
Vice President - John Schuchardt  
Secretary - - - - Drusilla Park  
Treasurer - - - - Kay Brown



Sponsor - - - - Miss Williamson  
President - - - - Marlene Lusk  
Vice President - Norman Jesse  
Secretary - - - - Alvina Poeschl  
Treasurer - - - - Erv Pohlman



GERMAN CLUB

LATIN CLUB

Sponsor - - - - Miss Hilleman  
President - - - - Gene Ingles  
Vice President - - Drusilla Park  
Secretary - - Frances Jankowski  
Treasurer - - - - Sadie Blake



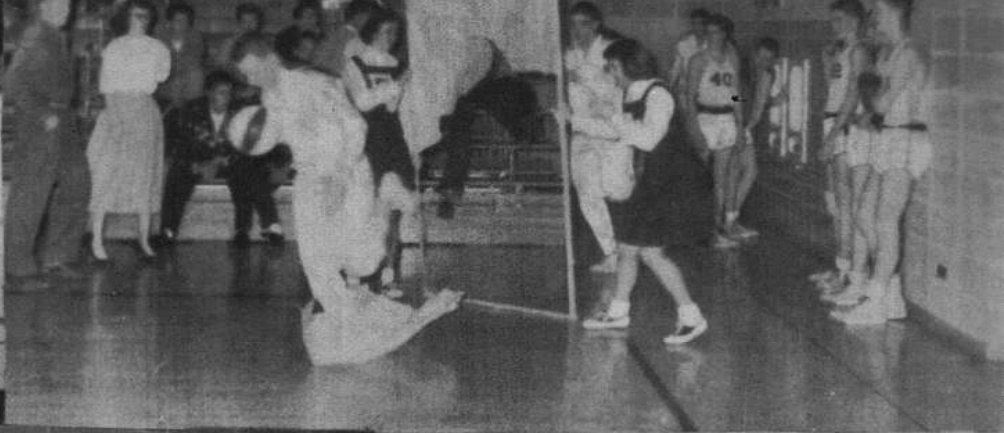


**JANUARY 11, 1956**



Archer's Bootery  
Art and Addie's  
Barrington Auto Sales  
Barrington Laundry  
Barrington Paint and Glass  
Benson's Foodliner  
Bill Luerssen's Sinclair Station  
Bob and Betty Shop  
Brandt Dairy  
Brehm's Garage  
Casey's Honey Farm  
Cliff Benjamin Construction Co.  
Commercial Trades Institute  
Conrad's  
Crossroads Exchange  
Dale's Hair-dressing Salon  
Darken's Sporting Goods  
Dato and Company, Inc.  
Jim DeBolt  
Dixon and Volling  
Drover Motor Co.  
Eddie's Barber Shop  
Farman's Hotel  
Farmside Country Store  
Fick Brothers  
Firnback Implement  
Fonda's Gift Shop  
Gene Frank's Newsstand  
Freund Brothers  
Geest and Wheeling Coal and Lumber Co.  
Harold Giese  
Giese Department Store  
Grindle Lincoln-Mercury  
Wm. R. Herrick and Son Hardware  
Gus Holland and Sons (trucking)  
Huszagh Brothers  
Indian Creek Garage  
Jim's Tavern  
Keer's Hardware  
Knox Dairy Bar  
Lake Zurich Beauty Shop  
Lake Zurich Cleaners and Sportswear  
Lake Zurich Hardware  
Lake Zurich Hotel

Lake Zurich Painting, Reid and Bacz  
Lake Zurich Pharmacy  
Lake Zurich Press  
Lake Zurich Washerette  
Landwer Motor Sales  
Larry's Auto Repair  
Walter A. Laun, Insurance  
Leikam Insurance  
Lipofsky's  
Loeffler's Grocery  
E. A. Lusk  
Masson Can Beverage  
Mossley Hill Orchards  
Willy Necker's Kennels  
Dr. W. G. Neids  
Ness and Falckenberg Real Estate  
Norm's Barber Shop  
Orchard Court Motel  
O. E. Payne, Optometrist  
Perkins Lumber and Fuel  
Dr. B. H. Pessis  
Phillip's Men's Wear  
Plagge's Flower  
Ponzio Jewelers  
Royal Blue Store  
Rural Rags  
Schauble Brothers  
Schutt's Shoe Store  
Scott's Shoes  
Shockey's Delicatessen  
Smith's Electric and Appliance Co.  
Snetsinger Florist  
State Bank of Lake Zurich  
Stirlen Funeral Homes  
The Kitchen  
The Seawall  
22 Drive Inn  
Fred Urbanek  
Vernon Garage  
Tom Vosnos (class rings)  
Wally's Body Shop  
Western Auto Association  
Howard Winzel's Jewelry  
Norman Aon Witt







**ELYTE**  
Finished at last!! Was it worth it??

1900  
YEARBOOKS  
PUBLISHED